

For Research Use Only

ASH2L Monoclonal antibody

Catalog Number: 67859-1-Ig



Basic Information

Catalog Number: 67859-1-Ig	GenBank Accession Number: BC015936	Purification Method: Protein A purification
Size: 150ul , Concentration: 1000 ug/ml by Nanodrop;	GeneID (NCBI): 9070	CloneNo.: 1G1H3
Source: Mouse	UNIPROT ID: Q9UBL3	Recommended Dilutions: WB: 1:2000-1:10000 IHC: 1:250-1:1000 FC (Intra): 0.40 ug per 10 ⁶ cells in a 100 µl suspension
Isotype: IgG2a	Full Name: ash2 (absent, small, or homeotic)-like (Drosophila)	
Immunogen Catalog Number: AG3008	Calculated MW: 628 aa, 69 kDa Observed MW: 80 kDa	

Applications

Tested Applications: WB, IHC, FC (Intra), ELISA	Positive Controls:
Species Specificity: human, rat	WB : LNCaP cells, HSC-T6 cells, HeLa cells, HEK-293 cells, PC-12 cells
Note-IHC: suggested antigen retrieval with TE buffer pH 9.0; (*) Alternatively, antigen retrieval may be performed with citrate buffer pH 6.0	IHC : human colon cancer tissue, FC (Intra) : HeLa cells,

Storage

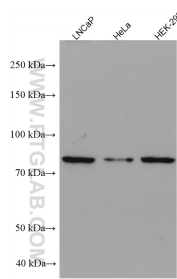
Storage:
Store at -20°C. Stable for one year after shipment.
Storage Buffer:
PBS with 0.02% sodium azide and 50% glycerol, pH7.3
Aliquoting is unnecessary for -20°C storage

*** 20ul sizes contain 0.1% BSA

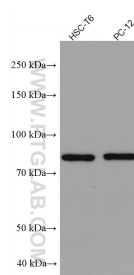
For technical support and original validation data for this product please contact:
T: 1 (888) 4PTGLAB (1-888-478-4522) (toll free in USA), or 1(312) 455-8498 (outside USA)
E: proteintech@ptglab.com
W: ptglab.com

This product is exclusively available under Proteintech Group brand and is not available to purchase from any other manufacturer.

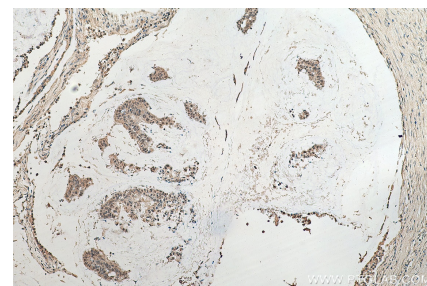
Selected Validation Data



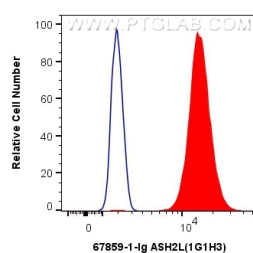
Various lysates were subjected to SDS PAGE followed by western blot with 67859-1-Ig (ASH2L antibody) at dilution of 1:5000 incubated at room temperature for 1.5 hours.



Various lysates were subjected to SDS PAGE followed by western blot with 67859-1-Ig (ASH2L antibody) at dilution of 1:5000 incubated at room temperature for 1.5 hours.



Immunohistochemical analysis of paraffin-embedded human colon cancer tissue slide using 67859-1-Ig (ASH2L antibody) at dilution of 1:500 (under 10x lens). Heat mediated antigen retrieval with Tris-EDTA buffer (pH 9.0).



1X10⁶ HeLa cells were intracellularly stained with 0.4 ug Anti-Human ASH2L (67859-1-Ig, Clone:1G1H3) and Coralite®488-Conjugated Goat Anti-Mouse IgG(H+L) at dilution 1:1000 (red), or 0.4 ug Mouse IgG2a Isotype Control (C1.18.4) (65208-1-Ig, Clone: C1.18.4) (blue). Cells were fixed and permeabilized with Transcription Factor Staining Buffer Kit (PF00011).