

For Research Use Only

# BCLAF1 Monoclonal antibody

Catalog Number: 67860-1-Ig

Featured Product

2 Publications



## Basic Information

Catalog Number:

67860-1-Ig

Size:

150ul, Concentration: 1000 ug/ml by Nanodrop;

Source:

Mouse

Isotype:

IgG1

Immunogen Catalog Number:

AG25210

GenBank Accession Number:

BC132780

GeneID (NCBI):

9774

UNIPROT ID:

Q9NYF8

Full Name:

BCL2-associated transcription factor 1

Calculated MW:

920 aa, 106 kDa

Observed MW:

145 kDa

Purification Method:

Protein G purification

CloneNo.:

1D6G7

Recommended Dilutions:

WB: 1:5000-1:50000

IHC: 1:500-1:2000

IF/ICC: 1:400-1:1600

FC (Intra): 0.50 ug per 10<sup>6</sup> cells in a 100 µl suspension

## Applications

Tested Applications:

WB, IHC, IF/ICC, FC (Intra), ELISA

Cited Applications:

WB, IHC, IF

Species Specificity:

human, mouse, rat

Cited Species:

human, mouse

**Note-IHC: suggested antigen retrieval with TE buffer pH 9.0; (\*) Alternatively, antigen retrieval may be performed with citrate buffer pH 6.0**

Positive Controls:

WB: A549 cells, LNCaP cells, HeLa cells, HEK-293 cells, Jurkat cells, K-562 cells, HL-60 cells, HSC-T6 cells, NIH/3T3 cells

IHC: mouse testis tissue,

IF/ICC: HeLa cells,

FC (Intra): HepG2 cells,

## Background Information

BCLF1, also named as Bcl-2-associated transcription factor 1, is a 920 amino acid protein, which Interacts with Bcl-2 related proteins, EMD, with the adenovirus E1B 19 kDa protein and with DNA. BCLF1 as a death-promoting transcriptional repressor may be involved in cyclin-D1/CCND1 mRNA stability through the SNARP complex which associates with both the 3'end of the CCND1 gene and its mRNA. The calculated molecular weight of BCLF1 is a 110 kDa, but the modified BCLF1 protein is about 140-150 kDa.

## Notable Publications

Author	Pubmed ID	Journal	Application
Wenwen Liu	35786405	Autophagy	WB
Zongdong Yu	38340178	Cell Mol Life Sci	WB,IHC,IF

## Storage

Storage:

Store at -20°C. Stable for one year after shipment.

Storage Buffer:

PBS with 0.02% sodium azide and 50% glycerol, pH7.3

Aliquoting is unnecessary for -20°C storage

\*\*\* 20ul sizes contain 0.1% BSA

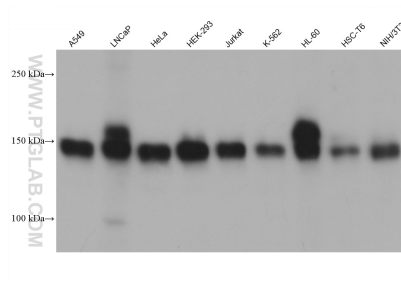
For technical support and original validation data for this product please contact:

T: 1 (888) 4PTGLAB (1-888-478-4522) (toll free in USA), or 1(312) 455-8498 (outside USA)

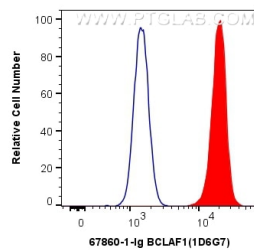
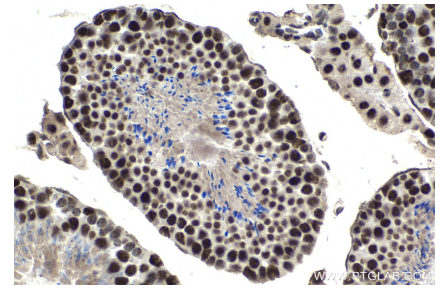
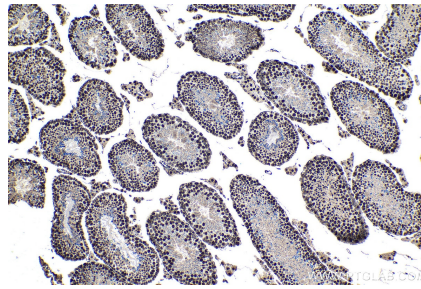
E: [proteintech@ptglab.com](mailto:proteintech@ptglab.com)  
W: [ptglab.com](http://ptglab.com)

This product is exclusively available under Proteintech Group brand and is not available to purchase from any other manufacturer.

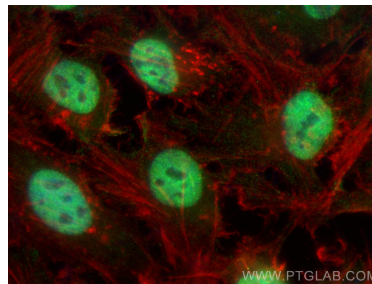
## Selected Validation Data



Various lysates were subjected to SDS PAGE followed by western blot with 67860-1-Ig (BCLAF1 antibody) at dilution of 1:10000 incubated at room temperature for 1.5 hours.



1X10<sup>6</sup> HepG2 cells were intracellularly stained with 0.5 ug Anti-Human BCLAF1 (67860-1-Ig, Clone:1D6G7) (red) labeled with FlexAble CoraLite® Plus 555 Antibody Labeling Kit for Mouse IgG1 (KFA022), or 0.5 ug Control Antibody. Cells were fixed and permeabilized with Transcription Factor Staining Buffer Kit (PF00011).



Immunofluorescent analysis of (4% PFA) fixed HeLa cells using BCLAF1 antibody (67860-1-Ig, Clone: 1D6G7 ) at dilution of 1:800 and CoraLite® 488-Conjugated Goat Anti-Mouse IgG(H+L) (SA00013-1), CL594-phalloidin (red).