

For Research Use Only

BCLAF1 Monoclonal antibody

Catalog Number: 67860-1-Ig

Featured Product

2 Publications



Basic Information

Catalog Number:

67860-1-Ig

Size:

150ul, Concentration: 1000 ug/ml by Nanodrop;

Source:

Mouse

Isotype:

IgG1

Immunogen Catalog Number:

AG25210

GenBank Accession Number:

BC132780

GeneID (NCBI):

9774

UNIPROT ID:

Q9NYF8

Full Name:

BCL2-associated transcription factor 1

Calculated MW:

920 aa, 106 kDa

Observed MW:

145 kDa

Purification Method:

Protein G purification

CloneNo.:

1D6G7

Recommended Dilutions:

WB 1:5000-1:50000

IHC 1:500-1:2000

IF/ICC 1:400-1:1600

Applications

Tested Applications:

WB, IHC, IF/ICC, FC (Intra), ELISA

Cited Applications:

WB, IHC, IF

Species Specificity:

human, mouse, rat

Cited Species:

human, mouse

Note-IHC: suggested antigen retrieval with TE buffer pH 9.0; (*) Alternatively, antigen retrieval may be performed with citrate buffer pH 6.0

Positive Controls:

WB : A549 cells, LNCaP cells, HeLa cells, HEK-293 cells, Jurkat cells, K-562 cells, HL-60 cells, HSC-T6 cells, NIH/3T3 cells

IHC : mouse testis tissue,

IF/ICC : HeLa cells,

Background Information

BCLF1, also named as Bcl-2-associated transcription factor 1, is a 920 amino acid protein, which Interacts with Bcl-2 related proteins, EMD, with the adenovirus E1B 19 kDa protein and with DNA. BCLF1 as a death-promoting transcriptional repressor may be involved in cyclin-D1/CCND1 mRNA stability through the SNARP complex which associates with both the 3'end of the CCND1 gene and its mRNA. The calculated molecular weight of BCLF1 is a 110 kDa, but the modified BCLF1 protein is about 140-150 kDa.

Notable Publications

Author	Pubmed ID	Journal	Application
Wenwen Liu	35786405	Autophagy	WB
Zongdong Yu	38340178	Cell Mol Life Sci	WB,IHC,IF

Storage

Storage:

Store at -20°C. Stable for one year after shipment.

Storage Buffer:

PBS with 0.02% sodium azide and 50% glycerol pH 7.3.

Aliquoting is unnecessary for -20°C storage

*** 20ul sizes contain 0.1% BSA

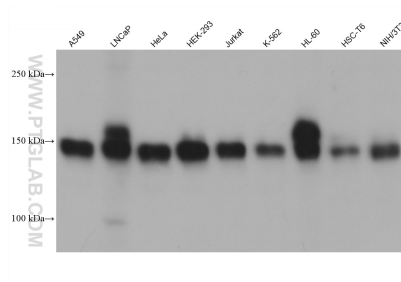
For technical support and original validation data for this product please contact:

T: 1 (888) 4PTGLAB (1-888-478-4522) (toll free in USA), or 1(312) 455-8498 (outside USA)

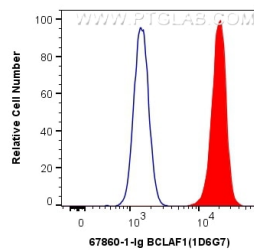
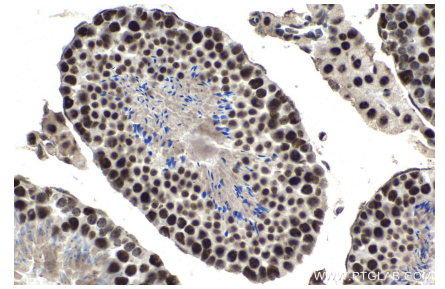
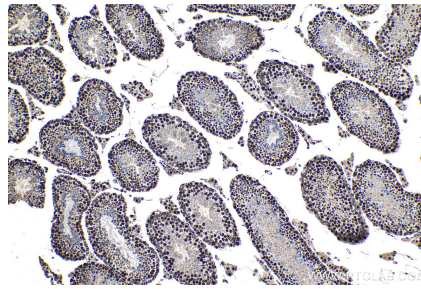
E: proteintech@ptglab.com
W: ptglab.com

This product is exclusively available under Proteintech Group brand and is not available to purchase from any other manufacturer.

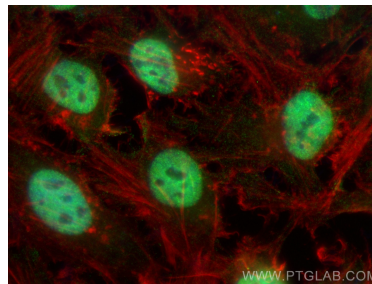
Selected Validation Data



Various lysates were subjected to SDS PAGE followed by western blot with 67860-1-Ig (BCLAF1 antibody) at dilution of 1:10000 incubated at room temperature for 1.5 hours.



1X10⁶ HepG2 cells were intracellularly stained with 0.5 ug Anti-Human BCLAF1 (67860-1-Ig, Clone:1D6G7) (red) labeled with FlexAble CoraLite® Plus 555 Antibody Labeling Kit for Mouse IgG1 (KFA022), or 0.5 ug Control Antibody. Cells were fixed and permeabilized with Transcription Factor Staining Buffer Kit (PF00011).



Immunofluorescent analysis of (4% PFA) fixed HeLa cells using BCLAF1 antibody (67860-1-Ig, Clone: 1D6G7) at dilution of 1:800 and CoraLite® 488-Conjugated Goat Anti-Mouse IgG(H+L) (SA00013-1), CL594-phalloidin (red).