

For Research Use Only

# HSP47 Monoclonal antibody

Catalog Number: 67863-1-Ig **1 Publications**



## Basic Information

<b>Catalog Number:</b> 67863-1-Ig	<b>GenBank Accession Number:</b> BC014623	<b>Purification Method:</b> Protein A purification
<b>Size:</b> 150ul , Concentration: 1000 µg/ml by Nanodrop;	<b>GeneID (NCBI):</b> 871	<b>CloneNo.:</b> 2A8F6
<b>Source:</b> Mouse	<b>UNIPROT ID:</b> P50454	<b>Recommended Dilutions:</b> WB 1:5000-1:50000 IHC 1:1000-1:4000 IF 1:400-1:1600
<b>Isotype:</b> IgG1	<b>Full Name:</b> serpin peptidase inhibitor, clade H (heat shock protein 47), member 1, (collagen binding protein 1)	
<b>Immunogen Catalog Number:</b> AG30999	<b>Calculated MW:</b> 46 kDa	
	<b>Observed MW:</b> 46 kDa	

## Applications

<b>Tested Applications:</b> WB, IF, IHC, ELISA	<b>Positive Controls:</b>
<b>Cited Applications:</b> WB	<b>WB :</b> K-562 cells, HEK-293T cells, NIH/3T3 cells, LNCaP cells, HeLa cells, Jurkat cells, HEK-293 cells, HSC-T6 cells, 4T1 cells
<b>Species Specificity:</b> Human, mouse, rat	<b>IHC :</b> human renal cell carcinoma tissue,
<b>Cited Species:</b> rat	<b>IF :</b> HeLa cells, HepG2 cells
<b>Note-IHC: suggested antigen retrieval with TE buffer pH 9.0; (*) Alternatively, antigen retrieval may be performed with citrate buffer pH 6.0</b>	

## Notable Publications

Author	Pubmed ID	Journal	Application
Bridgette Hartley	38264990	J Proteome Res	WB

## Storage

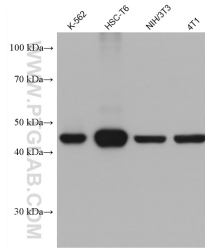
**Storage:**  
Store at -20°C. Stable for one year after shipment.  
**Storage Buffer:**  
PBS with 0.02% sodium azide and 50% glycerol pH 7.3.  
Aliquoting is unnecessary for -20°C storage

\*\*\* 20ul sizes contain 0.1% BSA

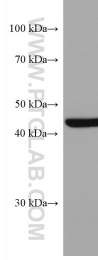
For technical support and original validation data for this product please contact:  
T: 1 (888) 4PTGLAB (1-888-478-4522) (toll free in USA), or 1(312) 455-8498 (outside USA)      E: proteintech@ptglab.com  
W: ptglab.com

This product is exclusively available under Proteintech Group brand and is not available to purchase from any other manufacturer.

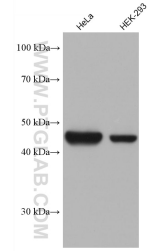
## Selected Validation Data



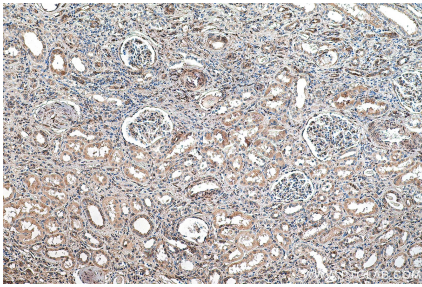
Various lysates were subjected to SDS PAGE followed by western blot with 67863-1-Ig (HSP47 antibody) at dilution of 1:20000 incubated at room temperature for 1.5 hours.



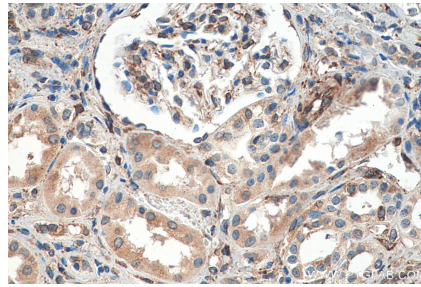
NIH/3T3 cells were subjected to SDS PAGE followed by western blot with 67863-1-Ig (SERPINH1 antibody) at dilution of 1:20000 incubated at room temperature for 1.5 hours.



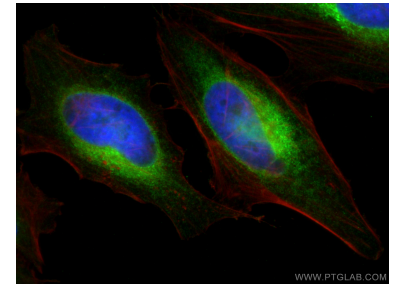
Various lysates were subjected to SDS PAGE followed by western blot with 67863-1-Ig (HSP47 antibody) at dilution of 1:20000 incubated at room temperature for 1.5 hours.



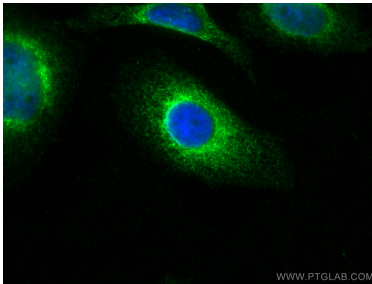
Immunohistochemical analysis of paraffin-embedded human renal cell carcinoma tissue slide using 67863-1-Ig (HSP47 antibody) at dilution of 1:2000 (under 10x lens). Heat mediated antigen retrieval with Tris-EDTA buffer (pH 9.0).



Immunohistochemical analysis of paraffin-embedded human renal cell carcinoma tissue slide using 67863-1-Ig (HSP47 antibody) at dilution of 1:2000 (under 40x lens). Heat mediated antigen retrieval with Tris-EDTA buffer (pH 9.0).



Immunofluorescent analysis of (4% PFA) fixed HeLa cells using HSP47 antibody (67863-1-Ig, Clone: 2A8F6) at dilution of 1:800 and CoraLite@488-Conjugated AffiniPure Goat Anti-Mouse IgG(H+L), CL594-Phalloidin (red).



Immunofluorescent analysis of (-20°C Ethanol) fixed HepG2 cells using HSP47 antibody (67863-1-Ig, Clone: 2A8F6) at dilution of 1:800 and CoraLite@488-Conjugated AffiniPure Goat Anti-Mouse IgG(H+L).