

For Research Use Only

# Synaptophysin Monoclonal antibody

Catalog Number: 67864-1-Ig 9 Publications



## Basic Information

Catalog Number:	GenBank Accession Number:	Purification Method:
67864-1-Ig	BC064550	Protein A purification
Size:	GeneID (NCBI):	CloneNo.:
150ul , Concentration: 500 µg/ml by Nanodrop;	6855	4E12C4
Source:	Full Name:	Recommended Dilutions:
Mouse	synaptophysin	WB 1:20000-1:100000
Isotype:	Calculated MW:	IHC 1:500-1:2000
IgG1	313 aa, 34 kDa	IF 1:200-1:800
Immunogen Catalog Number:	Observed MW:	
AG11803	38 kDa	

## Applications

Tested Applications:	Positive Controls:
IF, IHC, WB, ELISA	WB : PC-12 cells, pig brain tissue, rabbit brain tissue, rat brain tissue, mouse brain tissue, pig cerebellum tissue, rabbit cerebellum tissue, rat cerebellum tissue, mouse cerebellum tissue
Cited Applications:	IHC : mouse brain tissue,
IF, WB	IF : mouse pancreas tissue, Neuro-2a cells, PC-12 cells, mouse brain tissue
Species Specificity:	
Human, Pig, Mouse, Rat, Rabbit	
Cited Species:	
human, rat, mouse	
<b>Note-IHC: suggested antigen retrieval with TE buffer pH 9.0; (*) Alternatively, antigen retrieval may be performed with citrate buffer pH 6.0</b>	

## Background Information

Synaptophysin (SYP, also known as major synaptic vesicle protein p38) is a 38-kDa integral membrane glycoprotein that regulates synaptic vesicle endocytosis. It is the most abundant synaptic vesicle protein by mass. Synaptophysin is present in neuroendocrine cells and neurons that participate in synaptic transmission. Synaptophysin is a useful marker for identification of neuroendocrine cells and neoplasms. (PMID: 3010302; 21658579)

## Notable Publications

Author	Pubmed ID	Journal	Application
Kangyu Jin	36103758	Psychiatry Res	WB
Xu-Qiao Chen	36370135	Alzheimers Dement	WB
Yue Xu	35401120	Front Cell Neurosci	IF

## Storage

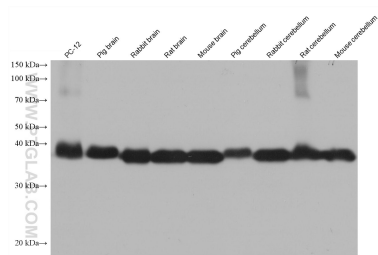
Storage:  
Store at -20°C. Stable for one year after shipment.  
Storage Buffer:  
PBS with 0.02% sodium azide and 50% glycerol pH 7.3.  
Aliquoting is unnecessary for -20°C storage

\*\*\* 20ul sizes contain 0.1% BSA

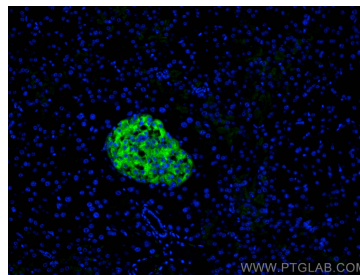
For technical support and original validation data for this product please contact:  
T: 1 (888) 4PTGLAB (1-888-478-4522) (toll free in USA), or 1(312) 455-8498 (outside USA)  
E: proteintech@ptglab.com  
W: ptglab.com

This product is exclusively available under Proteintech Group brand and is not available to purchase from any other manufacturer.

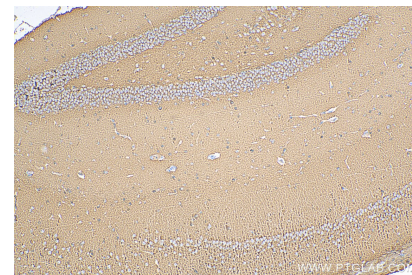
## Selected Validation Data



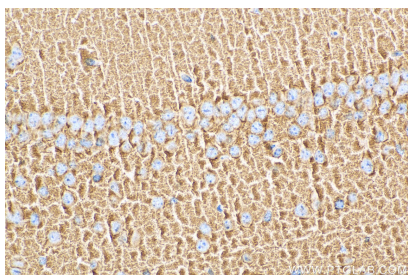
Various lysates were subjected to SDS PAGE followed by western blot with 67864-1-Ig (Synaptophysin antibody) at dilution of 1:100000 incubated at room temperature for 1.5 hours.



Immunofluorescent analysis of (4% PFA) fixed mouse pancreas tissue using Synaptophysin antibody (67864-1-Ig, Clone: 4E12C4) at dilution of 1:400 and CoraLite®488-Conjugated AffiniPure Goat Anti-Mouse IgG(H+L).



Immunohistochemical analysis of paraffin-embedded mouse brain tissue slide using 67864-1-Ig (Synaptophysin antibody) at dilution of 1:1000 (under 10x lens). Heat mediated antigen retrieval with Tris-EDTA buffer (pH 9.0).



Immunohistochemical analysis of paraffin-embedded mouse brain tissue slide using 67864-1-Ig (Synaptophysin antibody) at dilution of 1:1000 (under 40x lens). Heat mediated antigen retrieval with Tris-EDTA buffer (pH 9.0).