

For Research Use Only

# AATF Monoclonal antibody

Catalog Number: 67868-1-Ig

Featured Product

2 Publications



## Basic Information

<b>Catalog Number:</b> 67868-1-Ig	<b>GenBank Accession Number:</b> BC000591	<b>Purification Method:</b> Protein G purification
<b>Size:</b> 150ul , Concentration: 1000 µg/ml by Nanodrop;	<b>GeneID (NCBI):</b> 26574	<b>CloneNo.:</b> 2A6G6
<b>Source:</b> Mouse	<b>Full Name:</b> apoptosis antagonizing transcription factor	<b>Recommended Dilutions:</b> WB 1:5000-1:50000
<b>Isotype:</b> IgG1	<b>Calculated MW:</b> 63 kDa	
<b>Immunogen Catalog Number:</b> AG0195	<b>Observed MW:</b> 80-90 kDa	

## Applications

**Tested Applications:**  
FC, WB, ELISA

**Cited Applications:**  
IHC, WB

**Species Specificity:**  
Human, mouse, rat

**Cited Species:**  
human

**Positive Controls:**

WB : HCT 116 cells, Neuro-2a cells, HepG2 cells, LNCaP cells, HeLa cells, Jurkat cells, K-562 cells

## Background Information

### Notable Publications

Author	Pubmed ID	Journal	Application
Lin Fu	34785906	Onco Targets Ther	WB,IHC
Shutao Tan	35002255	Onco Targets Ther	WB,IHC

## Storage

**Storage:**

Store at -20°C. Stable for one year after shipment.

**Storage Buffer:**

PBS with 0.02% sodium azide and 50% glycerol pH 7.3.

Aliquoting is unnecessary for -20°C storage

\*\*\* 20ul sizes contain 0.1% BSA

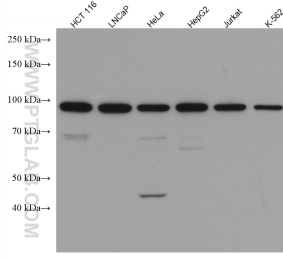
For technical support and original validation data for this product please contact:

T: 1 (888) 4PTGLAB (1-888-478-4522) (toll free in USA), or 1(312) 455-8498 (outside USA)

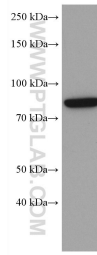
E: [proteintech@ptglab.com](mailto:proteintech@ptglab.com)  
W: [ptglab.com](http://ptglab.com)

This product is exclusively available under Proteintech Group brand and is not available to purchase from any other manufacturer.

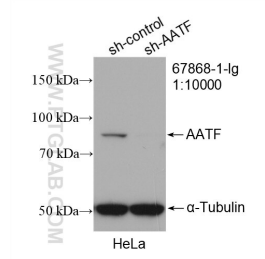
## Selected Validation Data



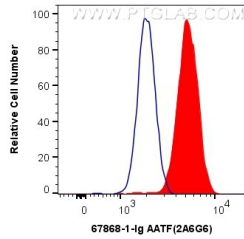
Various lysates were subjected to SDS PAGE followed by western blot with 67868-1-Ig (AATF antibody) at dilution of 1:10000 incubated at room temperature for 1.5 hours.



Neuro-2a cells were subjected to SDS PAGE followed by western blot with 67868-1-Ig (AATF antibody) at dilution of 1:10000 incubated at room temperature for 1.5 hours.



WB result of AATF antibody (67868-1-Ig; 1:10000; incubated at room temperature for 1.5 hours) with sh-Control and sh-AATF transfected HepG2 cells.



$1 \times 10^6$  HeLa cells were intracellularly stained with 0.5  $\mu$ g Anti-Human AATF (67868-1-Ig, Clone:2A6G6) (red) labeled with FlexAble CoraLite® Plus 555 Antibody Labeling Kit for Mouse IgG1 (KFA022), or 0.5  $\mu$ g Control Antibody. Cells were fixed and permeabilized with Transcription Factor Staining Buffer Kit (PF00011).