

For Research Use Only

GEMIN8 Monoclonal antibody

Catalog Number: 67871-1-Ig



Basic Information

Catalog Number: 67871-1-Ig	GenBank Accession Number: BC003607	Purification Method: Protein G purification
Size: 150ul , Concentration: 1000 µg/ml by Nanodrop;	GeneID (NCBI): 54960	CloneNo.: 1A6B4
Source: Mouse	Full Name: gem (nuclear organelle) associated protein 8	Recommended Dilutions: WB 1:2000-1:10000 IF 1:200-1:800
Isotype: IgG1	Calculated MW: 29 kDa	
Immunogen Catalog Number: AG6774		

Applications

Tested Applications: IF, WB, ELISA	Positive Controls:
Species Specificity: Human, mouse, rat	WB: NIH/3T3 cells, HeLa cells IF: HepG2 cells,

Background Information

GEMIN8, also named as FAM51A1 and Gemin-8, is associated with the SMN complex and is localized in the cytoplasm and in the nucleus, where it is highly concentrated in Gems. Gemin6, Gemin7, and Unrip form a stable cytoplasmic complex whose association with SMN requires Gemin8. Gemin8 binds directly to SMN and mediates its interaction with the Gemin6/Gemin7 heterodimer. This antibody recognizes GEMIN8(28-32kd) only.

Storage

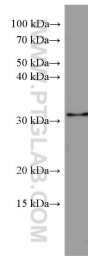
Storage:
Store at -20°C.
Storage Buffer:
PBS with 0.02% sodium azide and 50% glycerol pH 7.3.
Aliquoting is unnecessary for -20°C storage

*** 20ul sizes contain 0.1% BSA

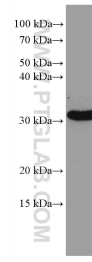
For technical support and original validation data for this product please contact:
T: 1 (888) 4PTGLAB (1-888-478-4522) (toll free in USA), or 1(312) 455-8498 (outside USA)
E: proteintech@ptglab.com
W: ptglab.com

This product is exclusively available under Proteintech Group brand and is not available to purchase from any other manufacturer.

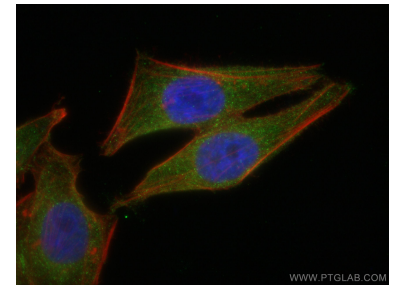
Selected Validation Data



HeLa cells were subjected to SDS PAGE followed by western blot with 67871-1-Ig (GEMIN8 antibody) at dilution of 1:5000 incubated at room temperature for 1.5 hours.



NIH/3T3 cells were subjected to SDS PAGE followed by western blot with 67871-1-Ig (GEMIN8 antibody) at dilution of 1:5000 incubated at room temperature for 1.5 hours.



Immunofluorescent analysis of (4% PFA) fixed HepG2 cells using GEMIN8 antibody (67871-1-Ig, Clone: 1A6B4) at dilution of 1:400 and CoraLite®488-Conjugated AffiniPure Goat Anti-Mouse IgG(H+L), CL594-Phalloidin (red). DAPI (Blue).