

For Research Use Only

MEK1 Monoclonal antibody

Catalog Number: 67872-1-Ig **1 Publications**



Basic Information

Catalog Number: 67872-1-Ig	GenBank Accession Number: BC139729	Purification Method: Protein G purification
Size: 150ul , Concentration: 1000 µg/ml by Nanodrop;	GeneID (NCBI): 5604	CloneNo.: 3F6D7
Source: Mouse	Full Name: mitogen-activated protein kinase kinase 1	Recommended Dilutions: WB 1:2000-1:10000
Isotype: IgG1	Calculated MW: 43 kDa	
	Observed MW: 40-50 kDa	

Applications

Tested Applications: WB, ELISA	Positive Controls: WB : A431 cells, HeLa cells, NIH/3T3 cells, HSC-T6 cells, PC-3 cells
Cited Applications: WB	
Species Specificity: Human, rat, mouse	
Cited Species: rat	

Background Information

MEK1 is also named as MAP2K1 (mitogen-activated protein kinase kinase 1), MAPKK1, PRKMK1, MKK1 and belongs to the MAP kinase kinase subfamily. It is a dual-specificity kinase that mediate ERK1 and ERK2 activation during adhesion and growth factor signaling (PMID:19219045). It also plays an essential role in extra-embryonic ectoderm during placentogenesis.

Notable Publications

Author	Pubmed ID	Journal	Application
Yin Wang	36693549	J Ethnopharmacol	WB

Storage

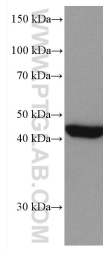
Storage:
Store at -20°C.
Storage Buffer:
PBS with 0.02% sodium azide and 50% glycerol pH 7.3.
Aliquoting is unnecessary for -20°C storage

*** 20ul sizes contain 0.1% BSA

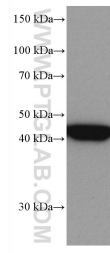
For technical support and original validation data for this product please contact:
T: 1 (888) 4PTGLAB (1-888-478-4522) (toll free in USA), or 1(312) 455-8498 (outside USA)
E: proteintech@ptglab.com
W: ptglab.com

This product is exclusively available under Proteintech Group brand and is not available to purchase from any other manufacturer.

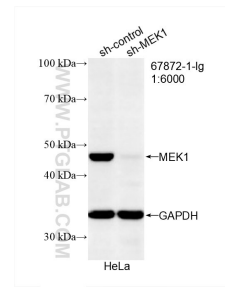
Selected Validation Data



A431 cells were subjected to SDS PAGE followed by western blot with 67872-1-Ig (MEK1 antibody) at dilution of 1:5000 incubated at room temperature for 1.5 hours.



Calyculin A treated HeLa cells were subjected to SDS PAGE followed by western blot with 67872-1-Ig (Phospho-MEK1 (Thr292) antibody) at dilution of 1:5000 incubated at room temperature for 1.5 hours.



WB result of MEK1 antibody (67872-1-Ig; 1:6000; incubated at room temperature for 1.5 hours) with sh-Control and sh-MEK1 transfected HeLa cells.