

For Research Use Only

TMED10 Monoclonal antibody

Catalog Number: 67876-1-Ig



Basic Information

Catalog Number: 67876-1-Ig	GenBank Accession Number: BC001825	Purification Method: Protein A purification
Size: 150ul , Concentration: 1000 µg/ml by Nanodrop;	GeneID (NCBI): 10972	CloneNo.: 3B11F9
Source: Mouse	Full Name: transmembrane emp24-like trafficking protein 10 (yeast)	Recommended Dilutions: WB 1:5000-1:50000 IHC 1:1000-1:4000 IF 1:400-1:1600
Isotype: IgG2b	Calculated MW: 25 kDa	
Immunogen Catalog Number: AG7516	Observed MW: 21 kDa	

Applications

Tested Applications:

IF, IHC, WB, ELISA

Species Specificity:

Human, Pig, Mouse, Rat

**Note-IHC: suggested antigen retrieval with
TE buffer pH 9.0; (*) Alternatively, antigen
retrieval may be performed with citrate
buffer pH 6.0**

Positive Controls:

WB: A549 cells, pig liver tissue, HeLa cells, HepG2
cells, Jurkat cells, Raji cells, rat liver tissue, mouse
liver tissue

IHC: human colon cancer tissue, mouse brain tissue

IF: HeLa cells,

Background Information

Storage

Storage:

Store at -20°C. Stable for one year after shipment.

Storage Buffer:

PBS with 0.02% sodium azide and 50% glycerol pH 7.3.

Aliquoting is unnecessary for -20°C storage

*** 20ul sizes contain 0.1% BSA

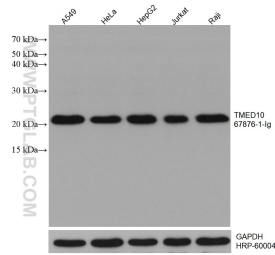
For technical support and original validation data for this product please contact:

T: 1 (888) 4PTGLAB (1-888-478-4522) (toll free
in USA), or 1(312) 455-8498 (outside USA)

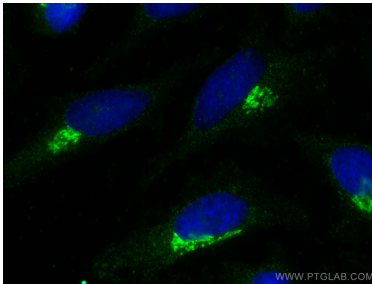
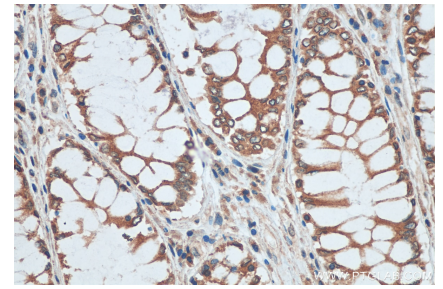
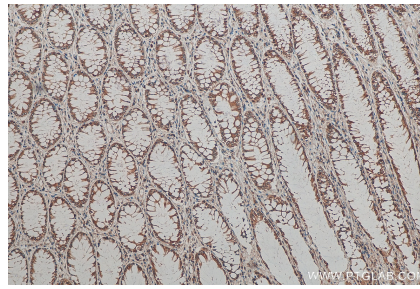
E: proteintech@ptglab.com
W: ptglab.com

This product is exclusively available under Proteintech
Group brand and is not available to purchase from any
other manufacturer.

Selected Validation Data



Various lysates were subjected to SDS PAGE followed by western blot with 67876-1-Ig (TMED10 antibody) at dilution of 1:20000 incubated at room temperature for 1.5 hours. The membrane was stripped and reblotted with HRP-conjugated GAPDH Monoclonal antibody (HRP-60004) as loading control.



Immunofluorescent analysis of (-20°C Methanol) fixed HeLa cells using TMED10 antibody (67876-1-Ig, Clone: 3B11F9) at dilution of 1:800 and CoraLite®488-Conjugated AffiniPure Goat Anti-Mouse IgG(H+L).