

For Research Use Only

CBFB Monoclonal antibody

Catalog Number: 67885-1-Ig



Basic Information

Catalog Number: 67885-1-Ig	GenBank Accession Number: BC018509	Purification Method: Protein G purification
Size: 150ul , Concentration: 1000 ug/ml by Nanodrop;	GeneID (NCBI): 865	CloneNo.: 1D7F2
Source: Mouse	UNIPROT ID: Q13951	Recommended Dilutions: WB 1:5000-1:50000
Isotype: IgG1	Full Name: core-binding factor, beta subunit	
Immunogen Catalog Number: AG31183	Calculated MW: 182 aa, 22 kDa	

Applications

Tested Applications: WB, FC (Intra), ELISA	Positive Controls: WB : Jurkat cells, HEK-293 cells, MOLT-4 cells, K-562 cells, HSC-T6 cells
Species Specificity: human, rat	

Background Information

CBFB (core binding factor subunit β), forms the heterodimeric complex core-binding factor (CBF). As a critical transcription factor, CBFB is frequently mutated in breast cancer and considered to be of significance in the pathogenesis of cancer.(PMID: 29932212) The heterodimers bind to the core site of a number of enhancers and promoters, including murine leukemia virus, polyomavirus enhancer, T-cell receptor enhancers, LCK, IL3 and GM-CSF promoters.) It has calculated molecular weight around 22kDa.

Storage

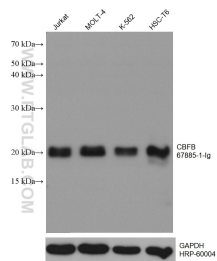
Storage:
Store at -20°C. Stable for one year after shipment.
Storage Buffer:
PBS with 0.02% sodium azide and 50% glycerol pH 7.3.
Aliquoting is unnecessary for -20°C storage

*** 20ul sizes contain 0.1% BSA

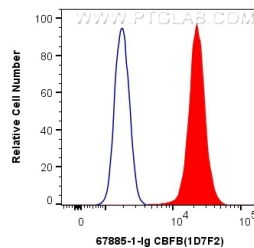
For technical support and original validation data for this product please contact:
T: 1 (888) 4PTGLAB (1-888-478-4522) (toll free in USA), or 1(312) 455-8498 (outside USA)
E: proteintech@ptglab.com
W: ptglab.com

This product is exclusively available under Proteintech Group brand and is not available to purchase from any other manufacturer.

Selected Validation Data



Various lysates were subjected to SDS PAGE followed by western blot with 67885-1-Ig (CBFβ antibody) at dilution of 1:20000 incubated at room temperature for 1.5 hours. The membrane was stripped and reblotted with HRP-conjugated GAPDH Monoclonal antibody (HRP-60004) as loading control.



1X10⁶ K-562 cells were intracellularly stained with 0.5 ug Anti-Human CBFβ (67885-1-Ig, Clone:1D7F2) (red) labeled with FlexAble CoraLite® Plus 555 Antibody Labeling Kit for Mouse IgG1 (KFA022), or 0.5 ug Control Antibody. Cells were fixed with 4% PFA and permeabilized with Flow Cytometry Perm Buffer (PF00011-C).