

For Research Use Only

# ARL8B Monoclonal antibody, PBS Only



Catalog Number: 67891-1-PBS

## Basic Information

<b>Catalog Number:</b> 67891-1-PBS	<b>GenBank Accession Number:</b> BC013131	<b>Purification Method:</b> Protein A purification
<b>Size:</b> 100ug , Concentration: 1mg/ml by Nanodrop;	<b>GeneID (NCBI):</b> 55207	<b>CloneNo.:</b> 2G10E2
<b>Source:</b> Mouse	<b>UNIPROT ID:</b> Q9NVJ2	
<b>Isotype:</b> IgG2a	<b>Full Name:</b> ADP-ribosylation factor-like 8B	
<b>Immunogen Catalog Number:</b> AG3711	<b>Calculated MW:</b> 186 aa, 22 kDa	
	<b>Observed MW:</b> 22 kDa	

## Applications

**Tested Applications:**  
WB, IF, Indirect ELISA

**Species Specificity:**  
Human, mouse, rat, pig

## Background Information

ARL8B ( ADP-ribosylation factor-like 8B ) , also known as ARL10C or GIE1, is a small GTPase of the Arl-family, that is associated with the lysosome. ARL8A interacts with Tubulin, and plays a role in lysosome motility, as well as in chromosomal segregation. ARL8B plays a role in the spatial distribution and positioning of lysosomes. ARL8B is regarded as a regulator of endosome to lysosome trafficking pathways of special significance for host defense.

## Storage

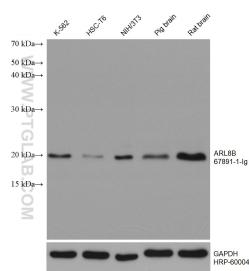
**Storage:**  
Store at -80°C.

**Storage Buffer:**  
PBS Only

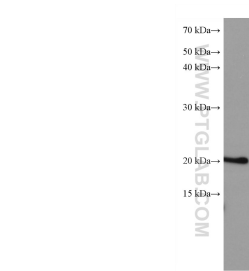
For technical support and original validation data for this product please contact:  
T: 1 (888) 4PTGLAB (1-888-478-4522) (toll free in USA), or 1(312) 455-8498 (outside USA)  
E: [proteintech@ptglab.com](mailto:proteintech@ptglab.com)  
W: [ptglab.com](http://ptglab.com)

This product is exclusively available under Proteintech Group brand and is not available to purchase from any other manufacturer.

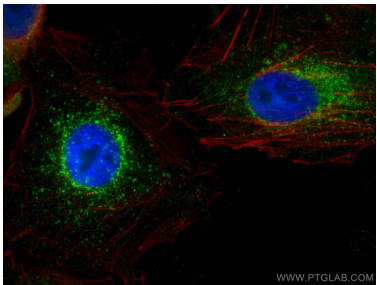
## Selected Validation Data



Various lysates were subjected to SDS PAGE followed by western blot with 67891-1-Ig (ARL8B antibody) at dilution of 1:10000 incubated at room temperature for 1.5 hours. The membrane was stripped and reblotted with HRP-conjugated GAPDH Monoclonal antibody (HRP-60004) as loading control. This data was developed using the same antibody clone with 67891-1-PBS in a different storage buffer formulation.



LNCaP cells were subjected to SDS PAGE followed by western blot with 67891-1-Ig (ARL8B antibody) at dilution of 1:10000 incubated at room temperature for 1.5 hours. This data was developed using the same antibody clone with 67891-1-PBS in a different storage buffer formulation.



Immunofluorescent analysis of (4% PFA) fixed A549 cells using ARL8B antibody (67891-1-Ig, Clone: 2G10E2 ) at dilution of 1:2000 and CoraLite®488-Conjugated AffiniPure Goat Anti-Mouse IgG(H+L), CL594-phalloidin (red). This data was developed using the same antibody clone with 67891-1-PBS in a different storage buffer formulation.