

For Research Use Only

# KBTBD2 Monoclonal antibody

Catalog Number: 67895-1-Ig

Featured Product

1 Publications



## Basic Information

<b>Catalog Number:</b> 67895-1-Ig	<b>GenBank Accession Number:</b> BC047107	<b>Purification Method:</b> Protein G purification
<b>Size:</b> 150ul , Concentration: 1000 µg/ml by Nanodrop;	<b>GeneID (NCBI):</b> 25948	<b>CloneNo.:</b> 2A9F3
<b>Source:</b> Mouse	<b>UNIPROT ID:</b> Q8IY47	<b>Recommended Dilutions:</b> WB 1:1000-1:6000 IF 1:200-1:800
<b>Isotype:</b> IgG1	<b>Full Name:</b> kelch repeat and BTB (POZ) domain containing 2	
<b>Immunogen Catalog Number:</b> AG4933	<b>Calculated MW:</b> 622 aa, 71 kDa	
	<b>Observed MW:</b> 60-70 kDa	

## Applications

<b>Tested Applications:</b> IF, WB, ELISA	<b>Positive Controls:</b>
<b>Cited Applications:</b> IHC, WB	<b>WB :</b> A549 cells, U2OS cells, HeLa cells, K-562 cells, Jurkat cells, HSC-T6 cells
<b>Species Specificity:</b> Human, mouse, rat	<b>IF :</b> HeLa cells,
<b>Cited Species:</b> human, mouse	

## Background Information

Kelch repeat and BTB domain containing 2 (KBTBD2), also known as BTB and kelch domain-containing protein 1, encodes a BTB-Kelch family subunit that p85α-specific recognition for the Cullin3-based E3 ubiquitin ligase complex, which regulates p85α protein ubiquitination and subsequently regulates phosphoinositide-3 kinases (PI3K) signaling (PMID:27708159). However, the expression profile and functional significance of Kbtbd2 is still largely unknown. The Human Protein Atlas which is an online source shows high Kbtbd2 expression in the spleen and thymus, suggesting that Kbtbd2 might involved in immunization (PMID:29331106). In addition, Kbtbd2 is related to Src-induced phosphorylation of protein, spermatogonial stem cell activity (PMID:15623525, 29331106).

## Notable Publications

Author	Pubmed ID	Journal	Application
Jishuang Ding	38237399	Pathol Res Pract	WB, IHC

## Storage

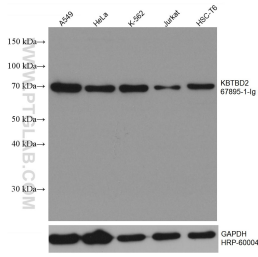
**Storage:**  
Store at -20°C. Stable for one year after shipment.  
**Storage Buffer:**  
PBS with 0.02% sodium azide and 50% glycerol pH 7.3.  
Aliquoting is unnecessary for -20°C storage

\*\*\* 20ul sizes contain 0.1% BSA

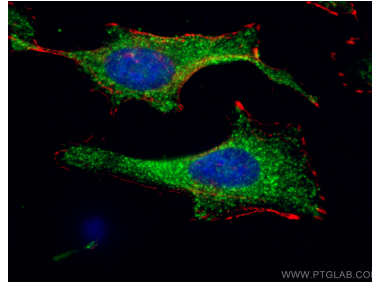
For technical support and original validation data for this product please contact:  
T: 1 (888) 4PTGLAB (1-888-478-4522) (toll free in USA), or 1(312) 455-8498 (outside USA)  
E: proteintech@ptglab.com  
W: ptglab.com

This product is exclusively available under Proteintech Group brand and is not available to purchase from any other manufacturer.

## Selected Validation Data



Various lysates were subjected to SDS PAGE followed by western blot with 67895-1-Ig (KBTBD2 antibody) at dilution of 1:3000 incubated at room temperature for 1.5 hours. The membrane was stripped and reblotted with HRP-conjugated GAPDH Monoclonal antibody (HRP-60004) as loading control.



Immunofluorescent analysis of (-20°C Ethanol) fixed HeLa cells using KBTBD2 antibody (67895-1-Ig, Clone: 2A9F3) at dilution of 1:400 and CoraLite®488-Conjugated AffiniPure Goat Anti-Mouse IgG(H+L), CL594-Phalloidin (red). DAPI (blue).