

For Research Use Only

# SLC25A36 Monoclonal antibody

Catalog Number: 67896-1-Ig **1 Publications**



## Basic Information

<b>Catalog Number:</b> 67896-1-Ig	<b>GenBank Accession Number:</b> BC014064	<b>Purification Method:</b> Protein G purification
<b>Size:</b> 150ul , Concentration: 1000 ug/ml by Nanodrop;	<b>GeneID (NCBI):</b> 55186	<b>CloneNo.:</b> 1E5E4
<b>Source:</b> Mouse	<b>UNIPROT ID:</b> Q96CQ1	<b>Recommended Dilutions:</b> WB 1:2000-1:10000 IHC 1:250-1:1000 IF/ICC 1:500-1:2000
<b>Isotype:</b> IgG1	<b>Full Name:</b> solute carrier family 25, member 36	
<b>Immunogen Catalog Number:</b> AG23894		

## Applications

<b>Tested Applications:</b> WB, IHC, IF/ICC, ELISA	<b>Positive Controls:</b>
<b>Cited Applications:</b> WB	<b>WB :</b> LNCaP cells, HeLa cells, HepG2 cells, Jurkat cells, K-562 cells, HSC-T6 cells, PC-12 cells, NIH/3T3 cells, 4T1 cells
<b>Species Specificity:</b> human, mouse, rat	<b>IHC :</b> human breast cancer tissue,
<b>Cited Species:</b> human	<b>IF/ICC :</b> A431 cells,
<b>Note-IHC: suggested antigen retrieval with TE buffer pH 9.0; (*) Alternatively, antigen retrieval may be performed with citrate buffer pH 6.0</b>	

## Notable Publications

Author	Pubmed ID	Journal	Application
Amit Safran	36695547	J Inherit Metab Dis	WB

## Storage

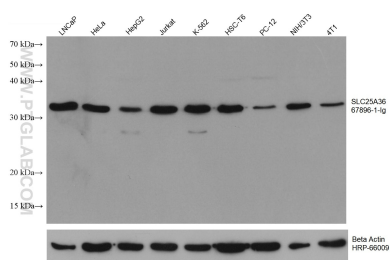
**Storage:**  
Store at -20°C. Stable for one year after shipment.  
**Storage Buffer:**  
PBS with 0.02% sodium azide and 50% glycerol pH 7.3.  
**Aliquoting is unnecessary for -20°C storage**

\*\*\* 20ul sizes contain 0.1% BSA

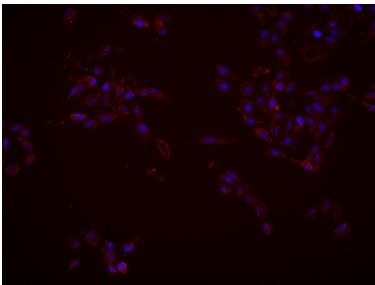
For technical support and original validation data for this product please contact:  
T: 1 (888) 4PTGLAB (1-888-478-4522) (toll free in USA), or 1(312) 455-8498 (outside USA)  
E: proteintech@ptglab.com  
W: ptglab.com

This product is exclusively available under Proteintech Group brand and is not available to purchase from any other manufacturer.

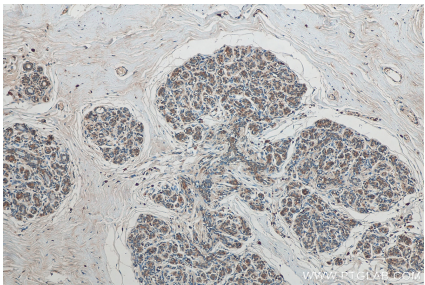
## Selected Validation Data



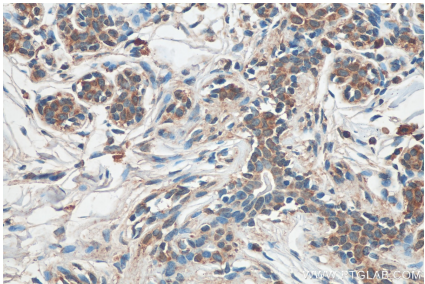
Various lysates were subjected to SDS PAGE followed by western blot with 67896-1-Ig (SLC25A36 antibody) at dilution of 1:5000 incubated at room temperature for 1.5 hours. The membrane was stripped and reblotted with HRP-conjugated Beta Actin Monoclonal antibody (HRP-66009) as loading control.



Immunofluorescent analysis of (4% PFA) fixed A431 cells using SLC25A36 antibody (67896-1-Ig, Clone: 1E5E4) at dilution of 1:1000 and Multi-rAb CoraLite® Plus 594-Goat Anti-Mouse Recombinant Secondary Antibody (H+L) (Cat.NO. RGAM004).



Immunohistochemical analysis of paraffin-embedded human breast cancer tissue slide using 67896-1-Ig (SLC25A36 antibody) at dilution of 1:500 (under 10x lens). Heat mediated antigen retrieval with Tris-EDTA buffer (pH 9.0).



Immunohistochemical analysis of paraffin-embedded human breast cancer tissue slide using 67896-1-Ig (SLC25A36 antibody) at dilution of 1:500 (under 40x lens). Heat mediated antigen retrieval with Tris-EDTA buffer (pH 9.0).