

For Research Use Only

Importin Alpha 5 Monoclonal antibody

Catalog Number: 67897-1-Ig

Featured Product

1 Publications



Basic Information

Catalog Number:

67897-1-Ig

Size:

150ul, Concentration: 1000 ug/ml by Nanodrop;

Source:

Mouse

Isotype:

IgG2a

Immunogen Catalog Number:

AG12751

GenBank Accession Number:

BC002374

GeneID (NCBI):

3836

UNIPROT ID:

P52294

Full Name:

karyopherin alpha 1 (importin alpha 5)

Calculated MW:

60 kDa

Observed MW:

60-62 kDa

Purification Method:

Protein A purification

CloneNo.:

2A7G7

Recommended Dilutions:

WB 1:5000-1:50000

IHC 1:500-1:2000

IF/ICC 1:200-1:800

Applications

Tested Applications:

WB, IHC, IF/ICC, ELISA

Cited Applications:

IF

Species Specificity:

Human, mouse, rat

Cited Species:

human

Note-IHC: suggested antigen retrieval with TE buffer pH 9.0; (*) Alternatively, antigen retrieval may be performed with citrate buffer pH 6.0

Positive Controls:

WB : HCT 116 cells, HSC-T6 cells, 4T1 cells, HeLa cells, HepG2 cells, Jurkat cells, K-562 cells, PC-12 cells, NIH/3T3 cells

IHC : mouse testis tissue,

IF/ICC : MCF-7 cells,

Background Information

Importins (alpha and beta) are transport factors that transport proteins into the nucleus. alpha importins function by binding transcription factors at nuclear localization sequences (NLS), and associating with importin beta subunits to translocate through the nuclear pore. Six isoforms of alpha importins have been described in human. Importin alpha 5 is the predominant importin in a adult CNS and is essential for differentiation and viability of neural cells.

Notable Publications

Author	Pubmed ID	Journal	Application
Patrick James Sutton	39484393	bioRxiv	IF

Storage

Storage:

Store at -20°C. Stable for one year after shipment.

Storage Buffer:

PBS with 0.02% sodium azide and 50% glycerol pH 7.3.

Aliquoting is unnecessary for -20°C storage

*** 20ul sizes contain 0.1% BSA

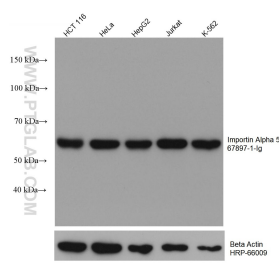
For technical support and original validation data for this product please contact:

T: 1 (888) 4PTGLAB (1-888-478-4522) (toll free in USA), or 1(312) 455-8498 (outside USA)

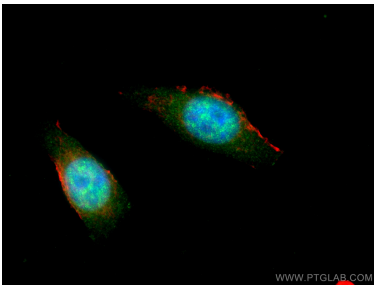
E: proteintech@ptglab.com
W: ptglab.com

This product is exclusively available under Proteintech Group brand and is not available to purchase from any other manufacturer.

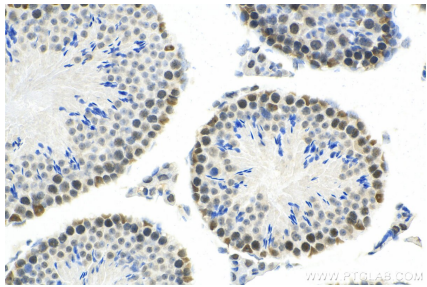
Selected Validation Data



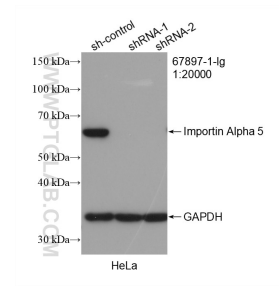
Various lysates were subjected to SDS PAGE followed by western blot with 67897-1-Ig (KPNA1 antibody) at dilution of 1:10000 incubated at room temperature for 1.5 hours. The membrane was stripped and reblotted with HRP-conjugated Beta Actin Monoclonal antibody (HRP-66009) as loading control.



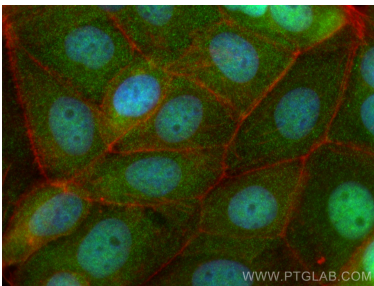
Immunofluorescent analysis of (4% PFA) fixed MCF-7 cells using Importin Alpha 5 antibody (67897-1-Ig, Clone: 2A7G7) at dilution of 1:400 and CoraLite®488-Conjugated Goat Anti-Mouse IgG(H+L), CL594-Phalloidin (red).



Immunohistochemical analysis of paraffin-embedded mouse testis tissue slide using 67897-1-Ig (Importin Alpha 5 antibody) at dilution of 1:1000 (under 40x lens). Heat mediated antigen retrieval with Tris-EDTA buffer (pH 9.0).



WB result of Importin Alpha 5 antibody (67897-1-Ig; 1:20000; incubated at room temperature for 1.5 hours) with sh-Control and sh-Importin Alpha 5 transfected HeLa cells.



Immunofluorescent analysis of (4% PFA) fixed MCF-7 cells using Importin Alpha 5 antibody (67897-1-Ig, Clone: 2A7G7) at dilution of 1:800 and CoraLite®488-Conjugated Goat Anti-Mouse IgG(H+L), CL594-Phalloidin (red).