

For Research Use Only

# Importin Alpha 5 Monoclonal antibody, PBS Only



Catalog Number: 67897-1-PBS

Featured Product

## Basic Information

Catalog Number:

67897-1-PBS

Size:

100ug, Concentration: 1 mg/ml by Nanodrop;

Source:

Mouse

Isotype:

IgG2a

Immunogen Catalog Number:

AG12751

GenBank Accession Number:

BC002374

GeneID (NCBI):

3836

UNIPROT ID:

P52294

Full Name:

karyopherin alpha 1 (importin alpha 5)

Calculated MW:

60 kDa

Observed MW:

60-62 kDa

Purification Method:

Protein A purification

CloneNo.:

2A7G7

## Applications

Tested Applications:

WB, IF, IHC, Indirect ELISA

Species Specificity:

Human, mouse, rat

## Background Information

Importins (alpha and beta) are transport factors that transport proteins into the nucleus. alpha importins function by binding transcription factors at nuclear localization sequences (NLS), and associating with importin beta subunits to translocate through the nuclear pore. Six isoforms of alpha importins have been described in human. Importin alpha 5 is the predominant importin in adult CNS and is essential for differentiation and viability of neural cells.

## Storage

Storage:

Store at -80°C.

Storage Buffer:

PBS Only

For technical support and original validation data for this product please contact:

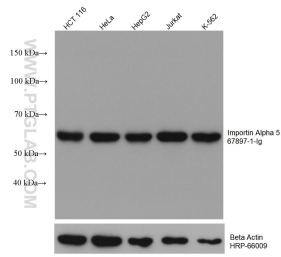
T: 1 (888) 4PTGLAB (1-888-478-4522) (toll free in USA), or 1(312) 455-8498 (outside USA)

E: [proteintech@ptglab.com](mailto:proteintech@ptglab.com)

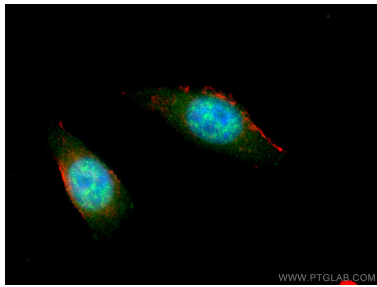
W: [ptglab.com](http://ptglab.com)

This product is exclusively available under Proteintech Group brand and is not available to purchase from any other manufacturer.

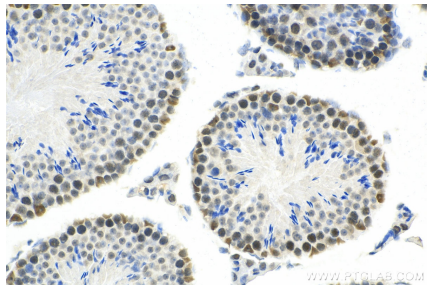
Selected Validation Data



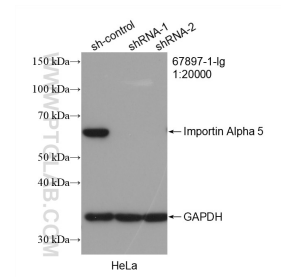
Various lysates were subjected to SDS PAGE followed by western blot with 67897-1-Ig (KPNA1 antibody) at dilution of 1:10000 incubated at room temperature for 1.5 hours. The membrane was stripped and reblotted with HRP-conjugated Beta Actin Monoclonal antibody (HRP-66009) as loading control. This data was developed using the same antibody clone with 67897-1-PBS in a different storage buffer formulation.



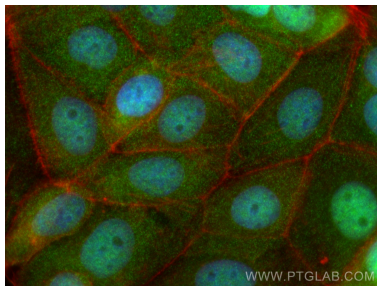
Immunofluorescent analysis of (4% PFA) fixed MCF-7 cells using Importin Alpha 5 antibody (67897-1-Ig, Clone: 2A7G7 ) at dilution of 1:400 and CoraLite®488-Conjugated AffiniPure Goat Anti-Mouse IgG(H+L), CL594-Phalloidin (red). This data was developed using the same antibody clone with 67897-1-PBS in a different storage buffer formulation.



Immunohistochemical analysis of paraffin-embedded mouse testis tissue slide using 67897-1-Ig (Importin Alpha 5 antibody) at dilution of 1:1000 (under 40x lens). Heat mediated antigen retrieval with Tris-EDTA buffer (pH 9.0). This data was developed using the same antibody clone with 67897-1-PBS in a different storage buffer formulation.



WB result of Importin Alpha 5 antibody (67897-1-Ig; 1:20000; incubated at room temperature for 1.5 hours) with sh-Control and sh-Importin Alpha 5 transfected HeLa cells. This data was developed using the same antibody clone with 67897-1-PBS in a different storage buffer formulation.



Immunofluorescent analysis of (4% PFA) fixed MCF-7 cells using Importin Alpha 5 antibody (67897-1-Ig, Clone: 2A7G7 ) at dilution of 1:800 and CoraLite®488-Conjugated AffiniPure Goat Anti-Mouse IgG(H+L), CL594-Phalloidin (red). This data was developed using the same antibody clone with 67897-1-PBS in a different storage buffer formulation.