

For Research Use Only

MRPS25 Monoclonal antibody

Catalog Number: 67903-1-Ig

Featured Product



Basic Information

Catalog Number:

67903-1-Ig

Size:

150ul , Concentration: 1000 ug/ml by Nanodrop;

Source:

Mouse

Isotype:

IgG2b

Immunogen Catalog Number:

AG7846

GenBank Accession Number:

BC003590

GeneID (NCBI):

64432

UNIPROT ID:

P82663

Full Name:

mitochondrial ribosomal protein S25

Calculated MW:

20 kDa

Observed MW:

20 kDa

Purification Method:

Protein A purification

CloneNo.:

3B10B6

Recommended Dilutions:

WB 1:2000-1:10000

Applications

Tested Applications:

WB, ELISA

Species Specificity:

Human, mouse, rat

Positive Controls:

WB : HeLa cells, NIH/3T3 cells, HepG2 cells, Jurkat cells, K-562 cells, HSC-T6 cells, PC-12 cells, 4T1 cells

Background Information

Mitochondrial ribosomal protein S25 (MRPS25) belongs to the ribosomal protein S25/L51 family. It is a component of the mitochondrial ribosome small subunit (28S). The variant segregated with the disease and substitutes a highly conserved proline residue with leucine (p.P72L) that, based on the high-resolution structure of the 28S ribosome, is predicted to compromise inter-protein contacts and destabilize the small subunit.

Storage

Storage:

Store at -20°C. Stable for one year after shipment.

Storage Buffer:

PBS with 0.02% sodium azide and 50% glycerol pH 7.3.

Aliquoting is unnecessary for -20°C storage

*** 20ul sizes contain 0.1% BSA

For technical support and original validation data for this product please contact:

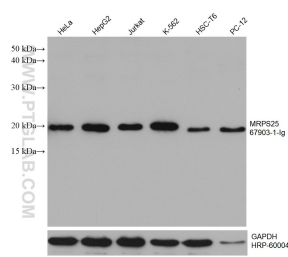
T: 1 (888) 4PTGLAB (1-888-478-4522) (toll free in USA), or 1(312) 455-8498 (outside USA)

E: proteintech@ptglab.com

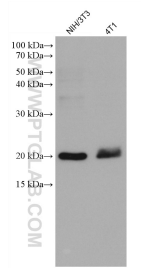
W: ptglab.com

This product is exclusively available under Proteintech Group brand and is not available to purchase from any other manufacturer.

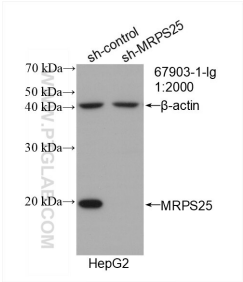
Selected Validation Data



Various lysates were subjected to SDS PAGE followed by western blot with 67903-1-Ig (MRPS25 antibody) at dilution of 1:5000 incubated at room temperature for 1.5 hours. The membrane was stripped and reblotted with HRP-conjugated GAPDH Monoclonal antibody (HRP-60004) as loading control.



Various lysates were subjected to SDS PAGE followed by western blot with 67903-1-Ig (MRPS25 antibody) at dilution of 1:5000 incubated at room temperature for 1.5 hours.



WB result of MRPS25 antibody (67903-1-Ig; 1:2000; incubated at room temperature for 1.5 hours) with sh-Control and sh-MRPS25 transfected HepG2 cells.