

For Research Use Only

METTL7A Monoclonal antibody

Catalog Number: 67905-1-Ig

Featured Product

1 Publications



Basic Information

Catalog Number:

67905-1-Ig

Size:

150ul, Concentration: 1000 ug/ml by Nanodrop;

Source:

Mouse

Isotype:

IgG1

Immunogen Catalog Number:

AG29986

GenBank Accession Number:

BC008180

GeneID (NCBI):

25840

UNIPROT ID:

Q9H8H3

Full Name:

methyltransferase like 7A

Calculated MW:

28 kDa

Observed MW:

28 kDa

Purification Method:

Protein A purification

CloneNo.:

1A9B4

Recommended Dilutions:

WB 1:5000-1:50000

IHC 1:500-1:2000

Applications

Tested Applications:

WB, IHC, ELISA

Cited Applications:

WB

Species Specificity:

human, mouse, rat, rabbit

Cited Species:

human

Note-IHC: suggested antigen retrieval with TE buffer pH 9.0; (*) Alternatively, antigen retrieval may be performed with citrate buffer pH 6.0

Positive Controls:

WB : rat liver tissue, LNCaP cells, mouse lung tissue, HepG2 cells, K-562 cells, mouse liver tissue, rabbit liver tissue

IHC : human thyroid cancer tissue, human liver cancer tissue

Background Information

methyltransferase like 7A (METTL7A) is a 244 amino acid protein which belongs to the methyltransferase super family. Methyltransferase can transfer a methyl group from a donor to an acceptor. Methylation may be linked to cancer development as methylation of tumor suppressor genes promotes tumorigenesis and metastasis.

Notable Publications

Author	Pubmed ID	Journal	Application
Yizhou Jin	38782892	Int J Oral Sci	WB

Storage

Storage:

Store at -20°C. Stable for one year after shipment.

Storage Buffer:

PBS with 0.02% sodium azide and 50% glycerol pH 7.3.

Aliquoting is unnecessary for -20°C storage

*** 20ul sizes contain 0.1% BSA

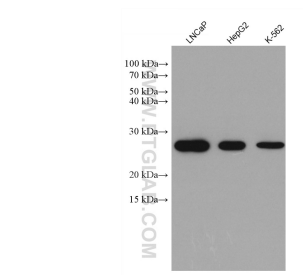
For technical support and original validation data for this product please contact:

T: 1 (888) 4PTGLAB (1-888-478-4522) (toll free in USA), or 1(312) 455-8498 (outside USA)

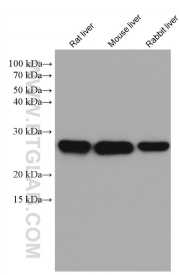
E: proteintech@ptglab.com
W: ptglab.com

This product is exclusively available under Proteintech Group brand and is not available to purchase from any other manufacturer.

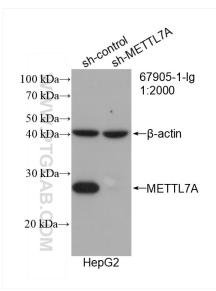
Selected Validation Data



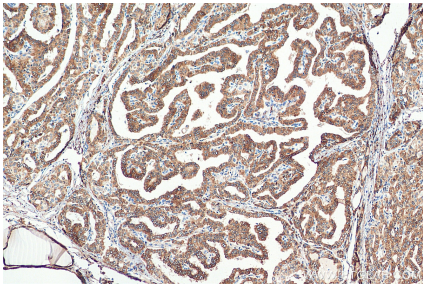
Various lysates were subjected to SDS PAGE followed by western blot with 67905-1-Ig (METTL7A antibody) at dilution of 1:10000 incubated at room temperature for 1.5 hours.



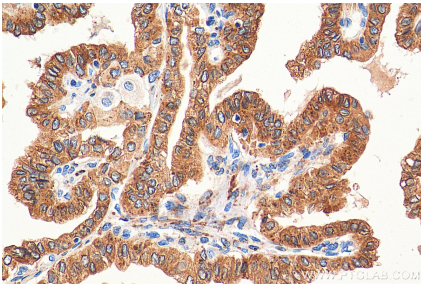
Various lysates were subjected to SDS PAGE followed by western blot with 67905-1-Ig (METTL7A antibody) at dilution of 1:10000 incubated at room temperature for 1.5 hours.



WB result of METTL7A antibody (67905-1-Ig; 1:2000; incubated at room temperature for 1.5 hours) with sh-Control and sh-METTL7A transfected HepG2 cells.



Immunohistochemical analysis of paraffin-embedded human thyroid cancer tissue slide using 67905-1-Ig (METTL7A antibody) at dilution of 1:1000 (under 10x lens). Heat mediated antigen retrieval with Tris-EDTA buffer (pH 9.0).



Immunohistochemical analysis of paraffin-embedded human thyroid cancer tissue slide using 67905-1-Ig (METTL7A antibody) at dilution of 1:1000 (under 40x lens). Heat mediated antigen retrieval with Tris-EDTA buffer (pH 9.0).