

For Research Use Only

# NXF1 Monoclonal antibody

Catalog Number: 67914-1-Ig



## Basic Information

<b>Catalog Number:</b> 67914-1-Ig	<b>GenBank Accession Number:</b> BC004904	<b>Purification Method:</b> Protein G purification
<b>Size:</b> 150ul , Concentration: 1000 µg/ml by Nanodrop;	<b>GeneID (NCBI):</b> 10482	<b>CloneNo.:</b> 2C2H1
<b>Source:</b> Mouse	<b>Full Name:</b> nuclear RNA export factor 1	<b>Recommended Dilutions:</b> WB 1:2000-1:10000 IF 1:1000-1:4000
<b>Isotype:</b> IgG1	<b>Calculated MW:</b> 70 kDa	
<b>Immunogen Catalog Number:</b> AG27329	<b>Observed MW:</b> 67 kDa	

## Applications

<b>Tested Applications:</b> IF, WB, ELISA	<b>Positive Controls:</b>
<b>Species Specificity:</b> Human	<b>WB :</b> HEK-293 cells, LNcaP cells, HeLa cells, HepG2 cells, K-562 cells, Jurkat cells <b>IF :</b> HEK-293 cells,

## Background Information

Nuclear RNA export factor 1 (NXF1, synonyms: TAP, MEX67) is one member of a family of nuclear RNA export factors. Common domain features of this family are a noncanonical RNP-type RNA-binding domain (RBD), 4 leucine-rich repeats (LRRs), a nuclear transport factor 2 (NTF2)-like domain that allows heterodimerization with NTF2-related export protein-1(NXT1), and a ubiquitin-associated domain that mediates interactions with nucleoporins. The LRRs and NTF2-like domains are required for export activity. This protein shuttles between the nucleus and the cytoplasm and binds in vivo to poly(A)<sup>+</sup> RNA. It is the vertebrate homologue of the yeast protein Mex67p. NXF1 overcomes the mRNA export block caused by the presence of saturating amounts of CTE (constitutive transport element) RNA of type D retroviruses.

## Storage

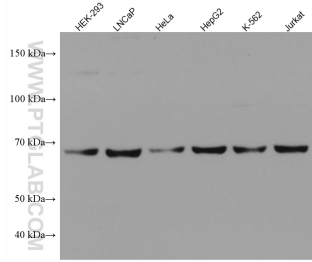
**Storage:**  
Store at -20°C. Stable for one year after shipment.  
**Storage Buffer:**  
PBS with 0.02% sodium azide and 50% glycerol pH 7.3.  
Aliquoting is unnecessary for -20°C storage

\*\*\* 20ul sizes contain 0.1% BSA

For technical support and original validation data for this product please contact:  
T: 1 (888) 4PTGLAB (1-888-478-4522) (toll free in USA), or 1(312) 455-8498 (outside USA)  
E: proteintech@ptglab.com  
W: ptglab.com

This product is exclusively available under Proteintech Group brand and is not available to purchase from any other manufacturer.

## Selected Validation Data



Various lysates were subjected to SDS PAGE followed by western blot with 67914-1-Ig (NXF1 antibody) at dilution of 1:5000 incubated at room temperature for 1.5 hours.