

For Research Use Only

# ROBO1 Monoclonal antibody, PBS Only



Catalog Number: 67922-1-PBS

## Basic Information

<b>Catalog Number:</b> 67922-1-PBS	<b>GenBank Accession Number:</b> BC112336	<b>Purification Method:</b> Protein G purification
<b>Size:</b> 100ug , Concentration: 1 mg/ml by Nanodrop;	<b>GeneID (NCBI):</b> 6091	<b>CloneNo.:</b> 2H4H5
<b>Source:</b> Mouse	<b>UNIPROT ID:</b> Q9Y6N7	
<b>Isotype:</b> IgG1	<b>Full Name:</b> roundabout, axon guidance receptor, homolog 1 (Drosophila)	
<b>Immunogen Catalog Number:</b> AG18074	<b>Calculated MW:</b> 1651 aa, 181 kDa	
	<b>Observed MW:</b> 200 kDa	

## Applications

**Tested Applications:**  
WB, IHC, ELISA

**Species Specificity:**  
Human, Mouse

## Background Information

ROBO1, also named as DUTT1, belongs to the immunoglobulin superfamily and ROBO family. It is a receptor for SLIT1 and SLIT2 which are thought to act as molecular guidance cue in cellular migration, including axonal navigation at the ventral midline of the neural tube and projection of axons to different regions during neuronal development. In axon growth cones, the silencing of the attractive effect of NTN1 by SLIT2 may require the formation of a ROBO1-DCC complex. It may be required for lung development.

## Storage

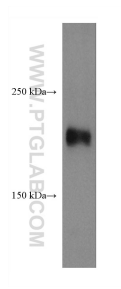
**Storage:**  
Store at -80°C.

**Storage Buffer:**  
PBS only

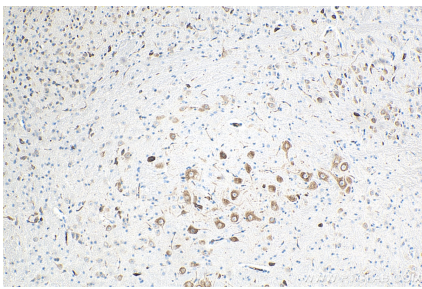
For technical support and original validation data for this product please contact:  
T: 1 (888) 4PTGLAB (1-888-478-4522) (toll free in USA), or 1(312) 455-8498 (outside USA)  
E: [proteintech@ptglab.com](mailto:proteintech@ptglab.com)  
W: [ptglab.com](http://ptglab.com)

This product is exclusively available under Proteintech Group brand and is not available to purchase from any other manufacturer.

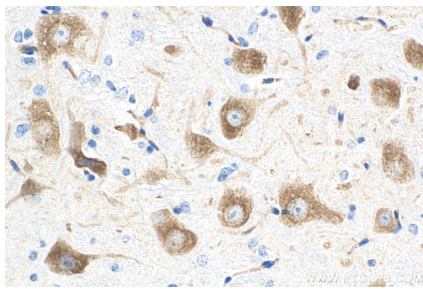
## Selected Validation Data



Y79 cells were subjected to SDS PAGE followed by western blot with 67922-1-Ig (ROBO1 antibody) at dilution of 1:10000 incubated at room temperature for 1.5 hours. This data was developed using the same antibody clone with 67922-1-PBS in a different storage buffer formulation.



Immunohistochemical analysis of paraffin-embedded mouse cerebellum tissue slide using 67922-1-Ig (ROBO1 antibody) at dilution of 1:5000 (under 10x lens). Heat mediated antigen retrieval with Tris-EDTA buffer (pH 9.0). This data was developed using the same antibody clone with 67922-1-PBS in a different storage buffer formulation.



Immunohistochemical analysis of paraffin-embedded mouse cerebellum tissue slide using 67922-1-Ig (ROBO1 antibody) at dilution of 1:5000 (under 40x lens). Heat mediated antigen retrieval with Tris-EDTA buffer (pH 9.0). This data was developed using the same antibody clone with 67922-1-PBS in a different storage buffer formulation.