

For Research Use Only



TRAPA/SSR1 Monoclonal antibody, PBS Only

Catalog Number: 67925-1-PBS

Basic Information

Catalog Number: 67925-1-PBS	GenBank Accession Number: BC007710	Purification Method: Protein G purification
Size: 100ug , Concentration: 1 mg/ml by Nanodrop;	GeneID (NCBI): 6745	CloneNo.: 1F2D7
Source: Mouse	UNIPROT ID: P43307	
Isotype: IgG1	Full Name: signal sequence receptor, alpha	
Immunogen Catalog Number: AG30832	Calculated MW: 34 kDa	
	Observed MW: 34 kDa	

Applications

Tested Applications:
WB, IF, IHC, Indirect ELISA

Species Specificity:
Human, Mouse, Rat

Background Information

TRAPA (translocon-associated protein subunit alpha), also known as SSR1 (signal sequence receptor subunit alpha), is a 34-kDa single-spanning membrane glycoprotein of the endoplasmic reticulum (ER) (PMID: 8050590). It is a part of the tetrameric TRAP complex (TRAP-alpha, TRAP-beta, TRAP-delta and TRAP-gamma) which functions in regulating the retention of ER resident proteins (PMID: 7916687). The TRAP complex is also involved in endoplasmic reticulum-associated degradation (ERAD) (PMID: 17380188).

Storage

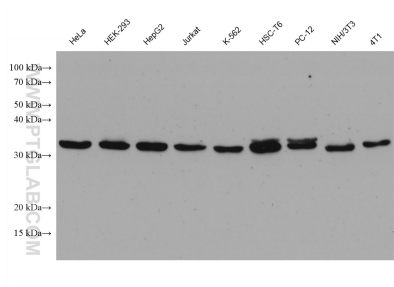
Storage:
Store at -80°C.

Storage Buffer:
PBS Only

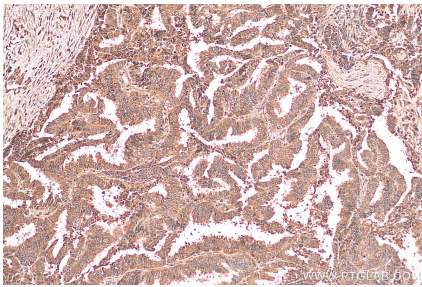
For technical support and original validation data for this product please contact:
T: 1 (888) 4PTGLAB (1-888-478-4522) (toll free in USA), or 1(312) 455-8498 (outside USA)
E: proteintech@ptglab.com
W: ptglab.com

This product is exclusively available under Proteintech Group brand and is not available to purchase from any other manufacturer.

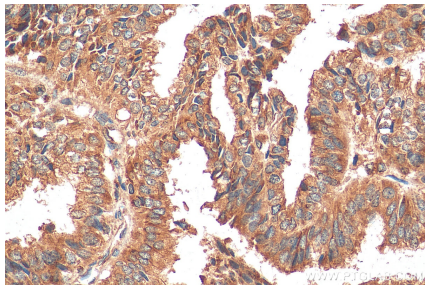
Selected Validation Data



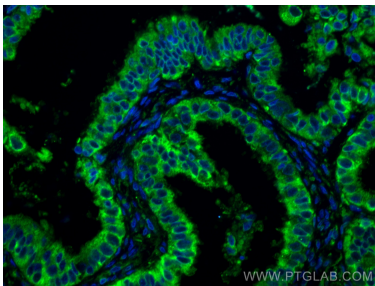
Various lysates were subjected to SDS PAGE followed by western blot with 67925-1-Ig (TRAPA/SSR1 antibody) at dilution of 1:20000 incubated at room temperature for 1.5 hours. This data was developed using the same antibody clone with 67925-1-PBS in a different storage buffer formulation.



Immunohistochemical analysis of paraffin-embedded human ovary tumor tissue slide using 67925-1-Ig (TRAPA/SSR1 antibody) at dilution of 1:2000 (under 10x lens). Heat mediated antigen retrieval with Tris-EDTA buffer (pH 9.0). This data was developed using the same antibody clone with 67925-1-PBS in a different storage buffer formulation.



Immunohistochemical analysis of paraffin-embedded human ovary tumor tissue slide using 67925-1-Ig (TRAPA/SSR1 antibody) at dilution of 1:2000 (under 40x lens). Heat mediated antigen retrieval with Tris-EDTA buffer (pH 9.0). This data was developed using the same antibody clone with 67925-1-PBS in a different storage buffer formulation.



Immunofluorescent analysis of (4% PFA) fixed human ovary tumor tissue using TRAPA/SSR1 antibody (67925-1-Ig, Clone: 1F2D7) at dilution of 1:400 and CoraLite®488-Conjugated AffiniPure Goat Anti-Mouse IgG(H+L). This data was developed using the same antibody clone with 67925-1-PBS in a different storage buffer formulation.