

For Research Use Only

SLC36A3 Monoclonal antibody

Catalog Number: 67929-1-Ig



Basic Information

Catalog Number:

67929-1-Ig

Size:

150ul, Concentration: 1000 ug/ml by Nanodrop;

Source:

Mouse

Isotype:

IgG1

Immunogen Catalog Number:

AG16556

GenBank Accession Number:

BC101092

GeneID (NCBI):

285641

UNIPROT ID:

Q495N2

Full Name:

solute carrier family 36 (proton/amino acid symporter), member 3

Calculated MW:

511 aa, 56 kDa

Observed MW:

51 kDa

Purification Method:

Protein G purification

CloneNo.:

1A8E6

Recommended Dilutions:

WB 1:1000-1:6000

IHC 1:500-1:2000

IF-P 1:200-1:800

Applications

Tested Applications:

WB, IHC, IF-P, ELISA

Species Specificity:

Human, Mouse

Note-IHC: suggested antigen retrieval with TE buffer pH 9.0; (*) Alternatively, antigen retrieval may be performed with citrate buffer pH 6.0

Positive Controls:

WB: unboiled mouse testis tissue, COLO 320 cells

IHC: mouse testis tissue,

IF-P: mouse testis tissue,

Storage

Storage:

Store at -20°C. Stable for one year after shipment.

Storage Buffer:

PBS with 0.02% sodium azide and 50% glycerol pH 7.3.

Aliquoting is unnecessary for -20°C storage

*** 20ul sizes contain 0.1% BSA

For technical support and original validation data for this product please contact:

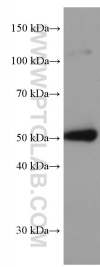
T: 1 (888) 4PTGLAB (1-888-478-4522) (toll free in USA), or 1(312) 455-8498 (outside USA)

E: proteintech@ptglab.com

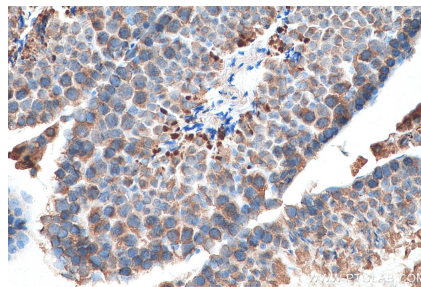
W: ptglab.com

This product is exclusively available under Proteintech Group brand and is not available to purchase from any other manufacturer.

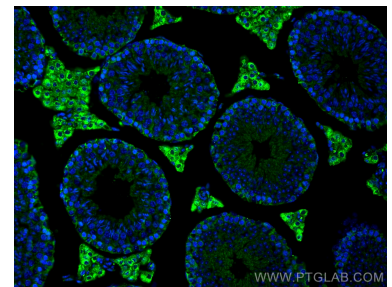
Selected Validation Data



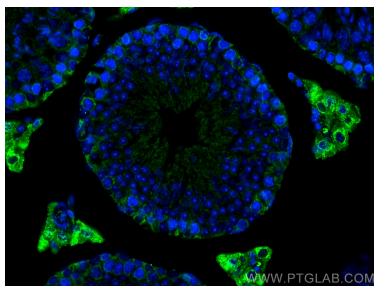
unboiled mouse testis tissue were subjected to SDS PAGE followed by western blot with 67929-1-Ig (SLC36A3 antibody) at dilution of 1:3000 incubated at room temperature for 1.5 hours.



Immunohistochemical analysis of paraffin-embedded mouse testis tissue slide using 67929-1-Ig (SLC36A3 antibody) at dilution of 1:1000 (under 40x lens). Heat mediated antigen retrieval with Tris-EDTA buffer (pH 9.0).



Immunofluorescent analysis of (4% PFA) fixed mouse testis tissue using SLC36A3 antibody (67929-1-Ig, Clone: 1A8E6) at dilution of 1:400 and Coralite®488-Conjugated AffiniPure Goat Anti-Mouse IgG(H+L).



Immunofluorescent analysis of (4% PFA) fixed mouse testis tissue using SLC36A3 antibody (67929-1-Ig, Clone: 1A8E6) at dilution of 1:400 and Coralite®488-Conjugated AffiniPure Goat Anti-Mouse IgG(H+L).