

For Research Use Only

SETD1A Monoclonal antibody

Catalog Number: 67936-1-Ig

Featured Product

5 Publications



Basic Information

Catalog Number:

67936-1-Ig

Size:

150ul, Concentration: 1000 ug/ml by Nanodrop;

Source:

Mouse

Isotype:

IgG1

Immunogen Catalog Number:

AG30424

GenBank Accession Number:

NM_014712

GeneID (NCBI):

9739

UNIPROT ID:

O15047

Full Name:

SET domain containing 1A

Calculated MW:

186 kDa

Observed MW:

270 kDa

Purification Method:

Protein G purification

CloneNo.:

1C2G12

Recommended Dilutions:

WB 1:5000-1:50000

Applications

Tested Applications:

WB, ELISA

Cited Applications:

WB, IF

Species Specificity:

Human, mouse, rat

Cited Species:

human, mouse

Positive Controls:

WB : HeLa cells, LNCaP cells, K-562 cells, HSC-T6 cells, NIH/3T3 cells, mouse brain tissue, HEK-293 cells, HepG2 cells, Jurkat cells

Background Information

SETD1A is a SET domain-containing methyltransferase involved in the epigenetic regulation of transcription (PMID:12670868). It is the main catalytic component of a multiprotein complex that methylates lysine 4 of histone H3, a histone mark associated with gene activation (PMID:29937342). Responsible for H3K4me3 enriched promoters and transcriptional programming of inner mass stem cells and neuron progenitors during embryogenesis (PMID:31197650). Does not methylate 'Lys-4' of histone H3 if the neighboring 'Lys-9' residue is already methylated (PubMed:12670868). SETD1A has a calculated molecular weight of 186 kDa, and a 258 kDa band was also reported (PMID: 31076518).

Notable Publications

Author	Pubmed ID	Journal	Application
Pawel Piatek	38745328	J Inflamm (Lond)	IF
Yali Qin	38750719	Cancer Lett	WB
Nini Zhang	38600123	Nat Commun	WB

Storage

Storage:

Store at -20°C. Stable for one year after shipment.

Storage Buffer:

PBS with 0.02% sodium azide and 50% glycerol pH 7.3.

Aliquoting is unnecessary for -20°C storage

*** 20ul sizes contain 0.1% BSA

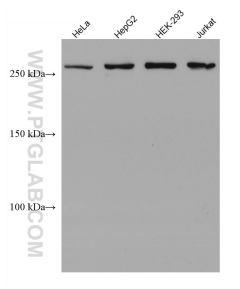
For technical support and original validation data for this product please contact:

T: 1 (888) 4PTGLAB (1-888-478-4522) (toll free in USA), or 1(312) 455-8498 (outside USA)

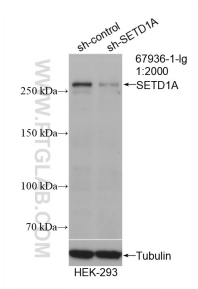
E: proteintech@ptglab.com
W: ptglab.com

This product is exclusively available under Proteintech Group brand and is not available to purchase from any other manufacturer.

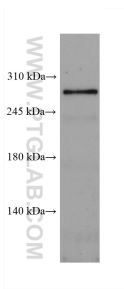
Selected Validation Data



Various lysates were subjected to SDS PAGE followed by western blot with 67936-1-Ig (SETD1A antibody) at dilution of 1:10000 and incubated at room temperature for 1.5 hours.



WB result of SETD1A antibody (67936-1-Ig; 1:2000; incubated at room temperature for 1.5 hours) with sh-Control and sh-SETD1A transfected HEK-293 cells.



Mouse brain tissue was subjected to SDS PAGE followed by western blot with 67936-1-Ig (SETD1A antibody) at a dilution of 1:3000 and incubated at room temperature for 1.5 hours.