

For Research Use Only

WDR1 Monoclonal antibody

Catalog Number: 67937-1-Ig

Featured Product

1 Publications



Basic Information

Catalog Number:

67937-1-Ig

Size:

150ul, Concentration: 1000 ug/ml by Nanodrop;

Source:

Mouse

Isotype:

IgG1

Immunogen Catalog Number:

AG30967

GenBank Accession Number:

BC030541

GeneID (NCBI):

9948

UNIPROT ID:

O75083

Full Name:

WD repeat domain 1

Calculated MW:

606 aa, 66 kDa

Observed MW:

65-66 kDa

Purification Method:

Protein G purification

CloneNo.:

2D11E1

Recommended Dilutions:

WB 1:5000-1:50000

Applications

Tested Applications:

WB, ELISA

Cited Applications:

WB

Species Specificity:

human, rat

Cited Species:

human

Positive Controls:

WB : A549 cells, rat testis tissue, HEK-293 cells, U-87 cells

Background Information

WDR1, which belongs to the WD repeat AIP1 family, also known as AIP1, is a 606 amino acid protein that localizes to the cytoskeleton. WD repeats are approximately 30- to 40-amino acid domains containing several conserved residues, mostly including a trp-asn at the C-terminal end. WDR1 induces the disassembly of actin filaments in conjunction with ADF/cofilin family proteins (PMID:15629458, 27557945, 29751004). WDR1 mutations may impair the ability of WDR1 to regulate cofilin-mediated actin depolymerization, and are associated with periodic fever, immunodeficiency, and thrombocytopenia syndrome (PMID: 27557945, 27994071, 29751004).

Notable Publications

Author	Pubmed ID	Journal	Application
Jingyun Li	37366253	Acta Physiol (Oxf)	WB

Storage

Storage:

Store at -20°C. Stable for one year after shipment.

Storage Buffer:

PBS with 0.02% sodium azide and 50% glycerol pH 7.3.

Aliquoting is unnecessary for -20°C storage

*** 20ul sizes contain 0.1% BSA

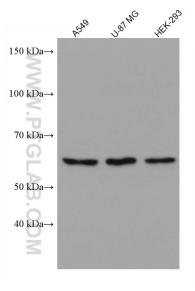
For technical support and original validation data for this product please contact:

T: 1 (888) 4PTGLAB (1-888-478-4522) (toll free in USA), or 1(312) 455-8498 (outside USA)

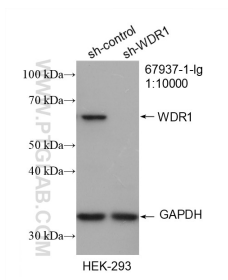
E: proteintech@ptglab.com
W: ptglab.com

This product is exclusively available under Proteintech Group brand and is not available to purchase from any other manufacturer.

Selected Validation Data



Various lysates were subjected to SDS PAGE followed by western blot with 67937-1-Ig (WDR1 antibody) at dilution of 1:10000 incubated at room temperature for 1.5 hours.



WB result of WDR1 antibody (67937-1-Ig; 1:10000; incubated at room temperature for 1.5 hours) with sh-Control and sh-WDR1 transfected HEK-293 cells.