

For Research Use Only

# WDR1 Monoclonal antibody, PBS Only



Catalog Number: 67937-1-PBS

Featured Product

## Basic Information

Catalog Number:

67937-1-PBS

Size:

100ug, Concentration: 1 mg/ml by Nanodrop;

Source:

Mouse

Isotype:

IgG1

Immunogen Catalog Number:

AG30967

GenBank Accession Number:

BC030541

GeneID (NCBI):

9948

UNIPROT ID:

O75083

Full Name:

WD repeat domain 1

Calculated MW:

606 aa, 66 kDa

Observed MW:

65-66 kDa

Purification Method:

Protein G purification

CloneNo.:

2D11E1

## Applications

Tested Applications:

WB, Indirect ELISA

Species Specificity:

Human, rat

## Storage

Storage:

Store at -80°C.

Storage Buffer:

PBS Only

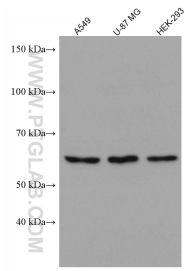
For technical support and original validation data for this product please contact:

T: 1 (888) 4PTGLAB (1-888-478-4522) (toll free in USA), or 1(312) 455-8498 (outside USA)

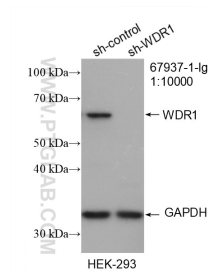
E: [proteintech@ptglab.com](mailto:proteintech@ptglab.com)  
W: [ptglab.com](http://ptglab.com)

This product is exclusively available under Proteintech Group brand and is not available to purchase from any other manufacturer.

## Selected Validation Data



Various lysates were subjected to SDS PAGE followed by western blot with 67937-1-Ig (WDR1 antibody) at dilution of 1:10000 incubated at room temperature for 1.5 hours. This data was developed using the same antibody clone with 67937-1-PBS in a different storage buffer formulation.



WB result of WDR1 antibody (67937-1-Ig; 1:10000; incubated at room temperature for 1.5 hours) with sh-Control and sh-WDR1 transfected HEK-293 cells. This data was developed using the same antibody clone with 67937-1-PBS in a different storage buffer formulation.