

For Research Use Only

PSMA3 Monoclonal antibody

Catalog Number: 67938-1-Ig



Basic Information

Catalog Number: 67938-1-Ig	GenBank Accession Number: BC029402	Purification Method: Protein A purification
Size: 150ul, Concentration: 1000 ug/ml by Nanodrop;	GeneID (NCBI): 5684	CloneNo.: 1A8C9
Source: Mouse	UNIPROT ID: P25788	Recommended Dilutions: WB 1:5000-1:50000 IHC 1:250-1:1000
Isotype: IgG2b	Full Name: proteasome (prosome, macropain) subunit, alpha type, 3	
Immunogen Catalog Number: AG30552	Calculated MW: 255 aa, 28 kDa	
	Observed MW: 28 kDa	

Applications

Tested Applications: WB, IHC, ELISA	Positive Controls:
Species Specificity: Human, mouse, rat	WB : A431 cells, U2OS cells, Hela cells, HEK-293 cells, Jurkat cells, K-562 cells, HSC-T6 cells, NIH/3T3 cells, 4T1 cells
Note-IHC: suggested antigen retrieval with TE buffer pH 9.0; (*) Alternatively, antigen retrieval may be performed with citrate buffer pH 6.0	IHC : human liver cancer tissue,

Background Information

PSMA3 (Proteasome subunit alpha type-3) is also named as HC8, PSC8 and belongs to the peptidase T1A family. The proteasome is a multicatalytic protease complex that catalyzes an energy-dependent, extralysosomal proteolytic pathway responsible for selective elimination of proteins with aberrant structures and naturally occurring short-lived proteins related to metabolic regulation and cell cycle progression. It has 2 isoforms produced by alternative splicing.

Storage

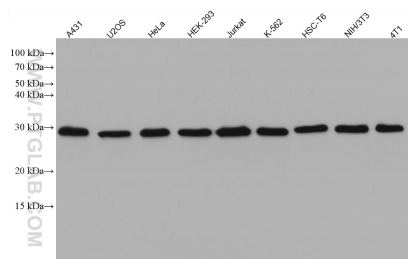
Storage:
Store at -20°C.
Storage Buffer:
PBS with 0.02% sodium azide and 50% glycerol pH 7.3.
Aliquoting is unnecessary for -20°C storage

*** 20ul sizes contain 0.1% BSA

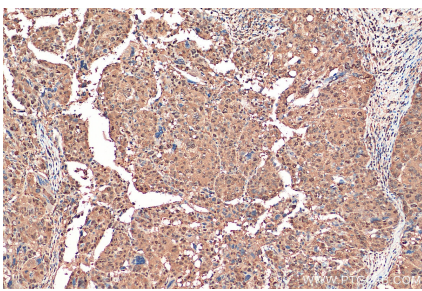
For technical support and original validation data for this product please contact:
T: 1 (888) 4PTGLAB (1-888-478-4522) (toll free in USA), or 1(312) 455-8498 (outside USA)
E: proteintech@ptglab.com
W: ptglab.com

This product is exclusively available under Proteintech Group brand and is not available to purchase from any other manufacturer.

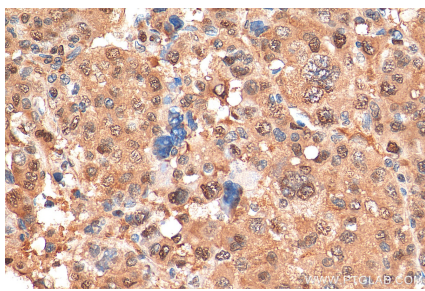
Selected Validation Data



Various lysates were subjected to SDS PAGE followed by western blot with 67938-1-Ig (PSMA3 antibody) at dilution of 1:20000 incubated at room temperature for 1.5 hours.



Immunohistochemical analysis of paraffin-embedded human liver cancer tissue slide using 67938-1-Ig (PSMA3 antibody) at dilution of 1:500 (under 10x lens). Heat mediated antigen retrieval with Tris-EDTA buffer (pH 9.0).



Immunohistochemical analysis of paraffin-embedded human liver cancer tissue slide using 67938-1-Ig (PSMA3 antibody) at dilution of 1:500 (under 40x lens). Heat mediated antigen retrieval with Tris-EDTA buffer (pH 9.0).