

For Research Use Only

# PARG Monoclonal antibody

Catalog Number: 67946-1-Ig



## Basic Information

Catalog Number: 67946-1-Ig	GenBank Accession Number: BC052966	Purification Method: Protein A purification
Size: 150ul , Concentration: 1000 ug/ml by Nanodrop;	GeneID (NCBI): 8505	CloneNo.: 1H10G10
Source: Mouse	UNIPROT ID: Q86W56	Recommended Dilutions: WB 1:5000-1:50000 IHC 1:250-1:1000 IF/ICC 1:400-1:1600
Isotype: IgG2b	Full Name: poly (ADP-ribose) glycohydrolase	
Immunogen Catalog Number: AG27288	Calculated MW: 111 kDa	
	Observed MW: 111 kDa	

## Applications

Tested Applications: WB, IHC, IF/ICC, ELISA	Positive Controls:
Species Specificity: Human	WB : A549 cells, LNCaP cells, HeLa cells, HEK-293 cells, Jurkat cells, K-562 cells
<b>Note-IHC: suggested antigen retrieval with TE buffer pH 9.0; (*) Alternatively, antigen retrieval may be performed with citrate buffer pH 6.0</b>	IHC : human breast cancer tissue,
	IF/ICC : A431 cells,

## Storage

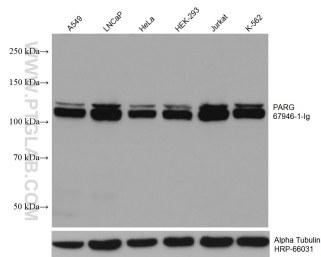
Storage:  
Store at -20°C. Stable for one year after shipment.  
Storage Buffer:  
PBS with 0.02% sodium azide and 50% glycerol pH 7.3.  
Aliquoting is unnecessary for -20°C storage

\*\*\* 20ul sizes contain 0.1% BSA

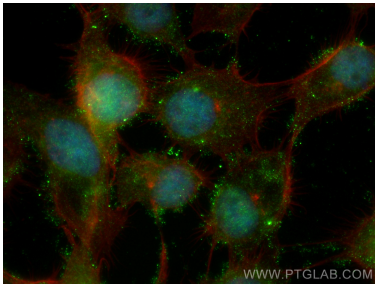
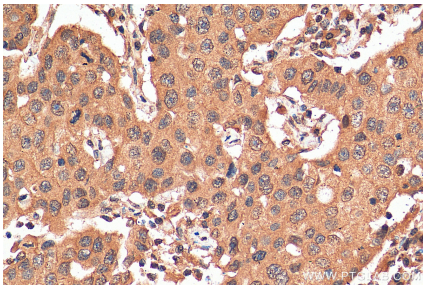
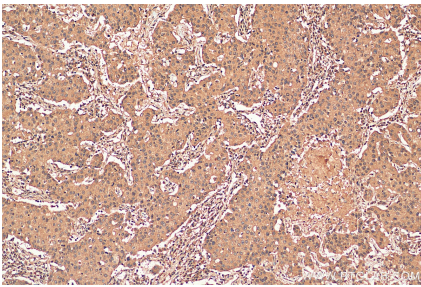
For technical support and original validation data for this product please contact:  
T: 1 (888) 4PTGLAB (1-888-478-4522) (toll free in USA), or 1(312) 455-8498 (outside USA)  
E: [proteintech@ptglab.com](mailto:proteintech@ptglab.com)  
W: [ptglab.com](http://ptglab.com)

This product is exclusively available under Proteintech Group brand and is not available to purchase from any other manufacturer.

## Selected Validation Data



Various lysates were subjected to SDS PAGE followed by western blot with 67946-1-Ig (PARG antibody) at dilution of 1:10000 incubated at room temperature for 1.5 hours. The membrane was stripped and reblotted with HRP-conjugated Alpha Tubulin Monoclonal antibody (HRP-66031) as loading control.



Immunofluorescent analysis of (4% PFA) fixed A431 cells using PARG antibody (67946-1-Ig, Clone: 1H10G10) at dilution of 1:800 and CoraLite®488-Conjugated AffiniPure Goat Anti-Mouse IgG(H+L), CL594-Phalloidin (red).