

For Research Use Only

PSMB5 Monoclonal antibody

Catalog Number: 67959-1-Ig

Featured Product



Basic Information

Catalog Number:

67959-1-Ig

Size:

150ul, Concentration: 1000 ug/ml by Nanodrop;

Source:

Mouse

Isotype:

IgG2a

Immunogen Catalog Number:

AG5828

GenBank Accession Number:

BC057840

GeneID (NCBI):

5693

UNIPROT ID:

P28074

Full Name:

proteasome (prosome, macropain) subunit, beta type, 5

Calculated MW:

263 aa, 28 kDa

Observed MW:

22 kDa

Purification Method:

Protein A purification

CloneNo.:

2E9H1

Recommended Dilutions:

WB 1:5000-1:50000

IHC 1:500-1:2000

IF/ICC 1:200-1:800

Applications

Tested Applications:

WB, IHC, IF/ICC, FC (Intra), ELISA

Species Specificity:

human

Note-IHC: suggested antigen retrieval with TE buffer pH 9.0; (*) Alternatively, antigen retrieval may be performed with citrate buffer pH 6.0

Positive Controls:

WB: A431 cells, HeLa cells, U2OS cells, HEK-293 cells, Jurkat cells, K-562 cells

IHC: human breast cancer tissue,

IF/ICC: HeLa cells,

Background Information

PSMB5 (Proteasome subunit beta type-5) is also named as LMPX, MB1, X and belongs to the peptidase T1B family. The proteasome is a multicatalytic proteinase complex which is characterized by its ability to cleave peptides with Arg, Phe, Tyr, Leu, and Glu adjacent to the leaving group at neutral or slightly basic pH. RNAi-mediated silencing of it has 2 isoforms produced by alternative splicing.

Storage

Storage:

Store at -20°C. Stable for one year after shipment.

Storage Buffer:

PBS with 0.02% sodium azide and 50% glycerol pH 7.3.

Aliquoting is unnecessary for -20°C storage

*** 20ul sizes contain 0.1% BSA

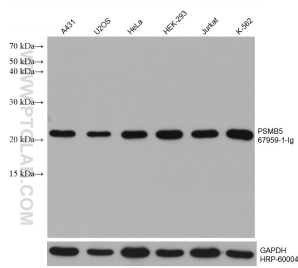
For technical support and original validation data for this product please contact:

T: 1 (888) 4PTGLAB (1-888-478-4522) (toll free in USA), or 1(312) 455-8498 (outside USA)

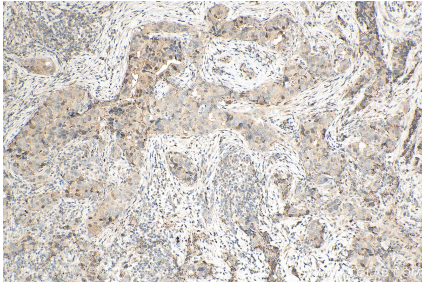
E: proteintech@ptglab.com
W: ptglab.com

This product is exclusively available under Proteintech Group brand and is not available to purchase from any other manufacturer.

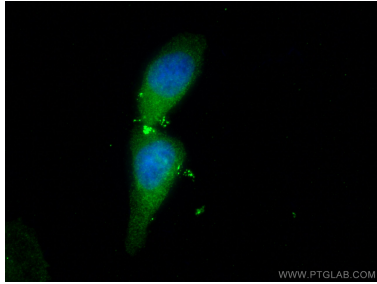
Selected Validation Data



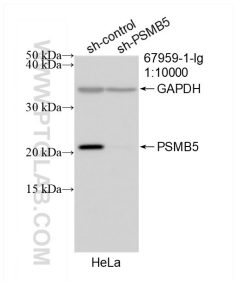
Various lysates were subjected to SDS PAGE followed by western blot with 67959-1-Ig (PSMB5 antibody) at dilution of 1:10000 incubated at room temperature for 1.5 hours. The membrane was stripped and reblotted with HRP-conjugated GAPDH Monoclonal antibody (HRP-60004) as loading control.



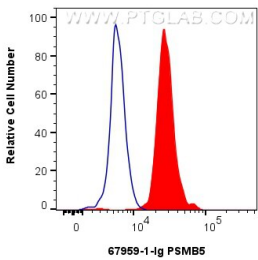
Immunohistochemical analysis of paraffin-embedded human breast cancer tissue slide using 67959-1-Ig (PSMB5 antibody) at dilution of 1:1000 (under 10x lens). Heat mediated antigen retrieval with Tris-EDTA buffer (pH 9.0).



Immunofluorescent analysis of (4% PFA) fixed HeLa cells using PSMB5 antibody (67959-1-Ig, Clone: 2E9H1) at dilution of 1:400 and CoraLite®488-Conjugated AffiniPure Goat Anti-Mouse IgG(H+L).



WB result of PSMB5 antibody (67959-1-Ig; 1:10000; incubated at room temperature for 1.5 hours) with sh-Control and sh-PSMB5 transfected HeLa cells.



1x10⁶ HepG2 cells were intracellularly stained with 0.25 ug PSMB5 Monoclonal antibody (67959-1-Ig, Clone:2E9H1) and CoraLite®488-Conjugated Goat Anti-Mouse IgG(H+L) (SA00013-1)(red), or 0.25 ug Mouse IgG2a isotype control Mouse McAb (66360-2-Ig, Clone: 11A1B2) (blue). Cells were fixed with 4% PFA and permeabilized with Flow Cytometry Perm Buffer (PF00011-C).