

For Research Use Only

ABCE1 Monoclonal antibody

Catalog Number: 67960-1-Ig



Basic Information

Catalog Number: 67960-1-Ig	GenBank Accession Number: BC016283	Purification Method: Protein A purification
Size: 150ul, Concentration: 1000 ug/ml by Nanodrop;	GeneID (NCBI): 6059	CloneNo.: 1B7E8
Source: Mouse	UNIPROT ID: P61221	Recommended Dilutions: WB 1:5000-1:50000 IHC 1:500-1:2000 IF/ICC 1:200-1:800
Isotype: IgG2b	Full Name: ATP-binding cassette, sub-family E (OABP), member 1	
Immunogen Catalog Number: AG28493	Calculated MW: 599 aa, 67 kDa	
	Observed MW: 68 kDa	

Applications

Tested Applications: WB, IHC, IF/ICC, ELISA	Positive Controls:
Species Specificity: Human, Mouse, Rat	WB : HepG2 cells, A431 cells, U2OS cells, Jurkat cells, K-562 cells, HSC-T6 cells, NIH/3T3 cells, 4T1 cells
Note-IHC: suggested antigen retrieval with TE buffer pH 9.0; (*) Alternatively, antigen retrieval may be performed with citrate buffer pH 6.0	IHC : human breast cancer tissue,
	IF/ICC : U2OS cells,

Background Information

ABCE1 is an ATPase that is a member of the ATP-binding cassette (ABC) transporters superfamily and OABP subfamily, it is an essential and highly conserved protein that is required for both eukaryotic translation initiation as well as ribosome biogenesis.

Storage

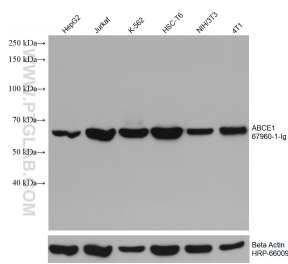
Storage:
Store at -20°C. Stable for one year after shipment.
Storage Buffer:
PBS with 0.02% sodium azide and 50% glycerol pH 7.3.
Aliquoting is unnecessary for -20°C storage

*** 20ul sizes contain 0.1% BSA

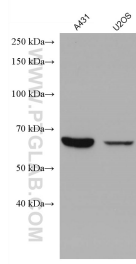
For technical support and original validation data for this product please contact:
T: 1 (888) 4PTGLAB (1-888-478-4522) (toll free in USA), or 1(312) 455-8498 (outside USA)
E: proteintech@ptglab.com
W: ptglab.com

This product is exclusively available under Proteintech Group brand and is not available to purchase from any other manufacturer.

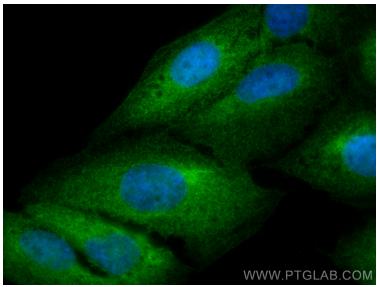
Selected Validation Data



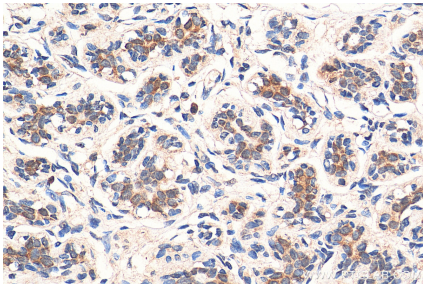
Various lysates were subjected to SDS PAGE followed by western blot with 67960-1-Ig (ABCE1 antibody) at dilution of 1:10000 incubated at room temperature for 1.5 hours. The membrane was stripped and reblotted with HRP-conjugated Beta Actin Monoclonal antibody (HRP-66009) as loading control.



Various lysates were subjected to SDS PAGE followed by western blot with 67960-1-Ig (ABCE1 antibody) at dilution of 1:10000 incubated at room temperature for 1.5 hours.



Immunofluorescent analysis of (4% PFA) fixed U2OS cells using ABCCE1 antibody (67960-1-Ig, Clone: 1B7E8) at dilution of 1:400 and CoraLite®488-Conjugated Goat Anti-Mouse IgG(H+L).



Immunohistochemical analysis of paraffin-embedded human breast cancer tissue slide using 67960-1-Ig (ABCE1 antibody) at dilution of 1:1000 (under 40x lens). Heat mediated antigen retrieval with Tris-EDTA buffer (pH 9.0).