

For Research Use Only

CCT6B Monoclonal antibody

Catalog Number: 67961-1-Ig **1 Publications**



Basic Information

Catalog Number: 67961-1-Ig	GenBank Accession Number: BC027591	Purification Method: Protein G purification
Size: 150ul , Concentration: 1000 ug/ml by Nanodrop;	GeneID (NCBI): 10693	CloneNo.: 2F11A9
Source: Mouse	UNIPROT ID: Q92526	Recommended Dilutions: WB: 1:2000-1:10000 IHC: 1:50-1:500 IF/ICC: 1:400-1:1600 FC (Intra): 0.40 ug per 10 ⁶ cells in a 100 µl suspension
Isotype: IgG1	Full Name: chaperonin containing TCP1, subunit 6B (zeta 2)	
Immunogen Catalog Number: AG31295	Calculated MW: 530 aa, 58 kDa	
	Observed MW: 53-58 kDa	

Applications

Tested Applications: WB, IHC, IF/ICC, FC (Intra), ELISA	Positive Controls: WB : Jurkat cells, NIH/3T3 cells, HSC-T6 cells, HEK-293 cells, K-562 cells IHC : mouse testis tissue, IF/ICC : U2OS cells, FC (Intra) : U2OS cells,
Cited Applications: WB	
Species Specificity: human, mouse, rat	
Cited Species: mouse	
Note-IHC: suggested antigen retrieval with TE buffer pH 9.0; (*) Alternatively, antigen retrieval may be performed with citrate buffer pH 6.0	

Background Information

CCT6B, also named as CCT-zeta-2, TCP-1-zeta-like, CCT-zeta-like, Testis-specific Tcp20 and Testis-specific protein TSA303, belongs to the TCP-1 chaperonin family. CCT6B is a molecular chaperone which assists the folding of proteins upon ATP hydrolysis. It is known to play a role, in vitro, in the folding of actin and tubulin. CCT6B has 3 isoforms with the molecular mass of 53-58 kDa.

Notable Publications

Author	Pubmed ID	Journal	Application
MengHua Li	39948392	Sci Rep	WB

Storage

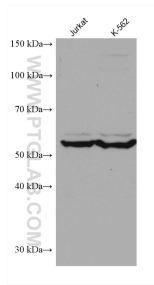
Storage:
Store at -20°C. Stable for one year after shipment.
Storage Buffer:
PBS with 0.02% sodium azide and 50% glycerol, pH7.3
Aliquoting is unnecessary for -20°C storage

*** 20ul sizes contain 0.1% BSA

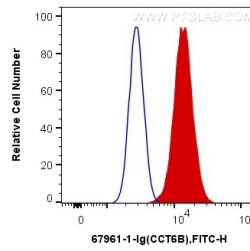
For technical support and original validation data for this product please contact:
T: 1 (888) 4PTGLAB (1-888-478-4522) (toll free in USA), or 1(312) 455-8498 (outside USA)
E: proteintech@ptglab.com
W: ptglab.com

This product is exclusively available under Proteintech Group brand and is not available to purchase from any other manufacturer.

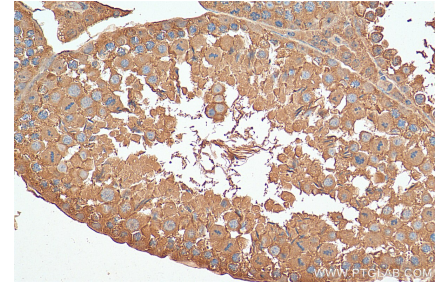
Selected Validation Data



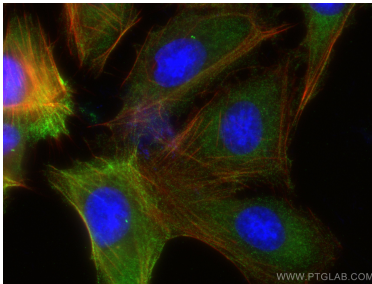
Various lysates were subjected to SDS PAGE followed by western blot with 67961-1-Ig (CCT6B antibody) at dilution of 1:5000 incubated at room temperature for 1.5 hours.



1X10⁶ U2OS cells were intracellularly stained with 0.4 ug Anti-Human CCT6B (67961-1-Ig, Clone:2F11A9) and CoraLite®488-Conjugated Goat Anti-Mouse IgG(H+L) at dilution 1:1000 (red), or 0.4 ug Control Antibody. Cells were fixed with 4% PFA and permeabilized with Flow Cytometry Perm Buffer (PF00011-C).



Immunohistochemical analysis of paraffin-embedded mouse testis tissue slide using 67961-1-Ig (CCT6B antibody) at dilution of 1:200 (under 40x lens). Heat mediated antigen retrieval with Tris-EDTA buffer (pH 9.0).



Immunofluorescent analysis of (-20°C Ethanol) fixed U2OS cells using CCT6B antibody (67961-1-Ig, Clone: 2F11A9) at dilution of 1:800 and CoraLite®488-Conjugated Goat Anti-Mouse IgG(H+L), CL594-Phalloidin (red).