

For Research Use Only

# PI3 Kinase p110 Delta Monoclonal antibody



Catalog Number: 67964-1-Ig

## Basic Information

<b>Catalog Number:</b> 67964-1-Ig	<b>GenBank Accession Number:</b> BC132919	<b>Purification Method:</b> Protein G purification
<b>Size:</b> 150ul , Concentration: 1000 µg/ml by Nanodrop;	<b>GeneID (NCBI):</b> 5293	<b>CloneNo.:</b> 2G11C6
<b>Source:</b> Mouse	<b>Full Name:</b> phosphoinositide-3-kinase, catalytic, delta polypeptide	<b>Recommended Dilutions:</b> WB 1:2000-1:10000 IF 1:400-1:1600
<b>Isotype:</b> IgG1	<b>Calculated MW:</b> 1044 aa, 120 kDa	
<b>Immunogen Catalog Number:</b> AG26995	<b>Observed MW:</b> 110 kDa	

## Applications

**Tested Applications:**  
IF, WB, ELISA

**Species Specificity:**  
Human

**Positive Controls:**  
WB : LNCaP cells, Jurkat cells  
IF : LNCaP cells,

## Background Information

### Storage

**Storage:**  
Store at -20°C. Stable for one year after shipment.

**Storage Buffer:**  
PBS with 0.02% sodium azide and 50% glycerol pH 7.3.

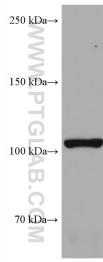
Aliquoting is unnecessary for -20°C storage

\*\*\* 20ul sizes contain 0.1% BSA

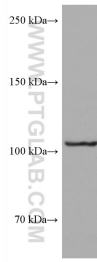
For technical support and original validation data for this product please contact:  
T: 1 (888) 4PTGLAB (1-888-478-4522) (toll free in USA), or 1(312) 455-8498 (outside USA) E: proteintech@ptglab.com W: ptglab.com

This product is exclusively available under Proteintech Group brand and is not available to purchase from any other manufacturer.

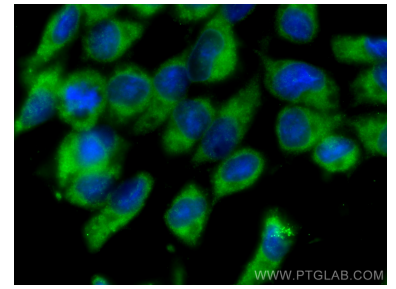
## Selected Validation Data



LNCaP cells were subjected to SDS PAGE followed by western blot with 67964-1-Ig (PIK3CD antibody) at dilution of 1:5000 incubated at room temperature for 1.5 hours.



Jurkat cells were subjected to SDS PAGE followed by western blot with 67964-1-Ig (PIK3CD antibody) at dilution of 1:5000 incubated at room temperature for 1.5 hours.



Immunofluorescent analysis of (-20°C Methanol) fixed LNCaP cells using PIK3CD antibody (67964-1-Ig, Clone: 2G11C6) at dilution of 1:800 and CoraLite®488-Conjugated AffiniPure Goat Anti-Mouse IgG(H+L).