

For Research Use Only

MFSD2 Monoclonal antibody

Catalog Number: 67965-1-Ig **1 Publications**



Basic Information

Catalog Number: 67965-1-Ig	GenBank Accession Number: BC092414	Purification Method: Protein A purification
Size: 150ul , Concentration: 1000 ug/ml by Nanodrop;	GeneID (NCBI): 84879	CloneNo.: 2D2B4
Source: Mouse	UNIPROT ID: Q8NA29	Recommended Dilutions: WB 1:5000-1:50000
Isotype: IgG2a	Full Name: major facilitator superfamily domain containing 2	
Immunogen Catalog Number: AG31028	Calculated MW: 543 aa, 60 kDa	
	Observed MW: 60 kDa	

Applications

Tested Applications: WB, ELISA	Positive Controls: WB : human placenta tissue, human testis tissue
Cited Applications: WB	
Species Specificity: human, mouse	
Cited Species: mouse	

Background Information

MFSD2, also named as MFSD2A, belongs to a large family of presumptive carbohydrate transporters with 10-12 membrane-spanning domains, is located at chromosomal position 1p34.2, and is conserved in evolution. It plays a role in thermogenesis via beta-adrenergic signaling pathway. It may be the main plasma membrane tunicamycin transporter. MFSD2 has three isoforms with MW 50 kDa and 59-60 kDa.

Notable Publications

Author	Pubmed ID	Journal	Application
Teng Wei	39232272	Food Chem	WB

Storage

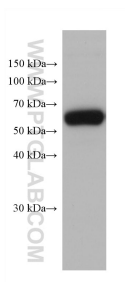
Storage:
Store at -20°C. Stable for one year after shipment.
Storage Buffer:
PBS with 0.02% sodium azide and 50% glycerol pH 7.3.
Aliquoting is unnecessary for -20°C storage

*** 20ul sizes contain 0.1% BSA

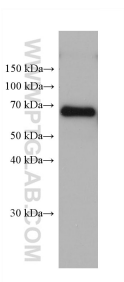
For technical support and original validation data for this product please contact:
T: 1 (888) 4PTGLAB (1-888-478-4522) (toll free in USA), or 1(312) 455-8498 (outside USA)
E: proteintech@ptglab.com
W: ptglab.com

This product is exclusively available under Proteintech Group brand and is not available to purchase from any other manufacturer.

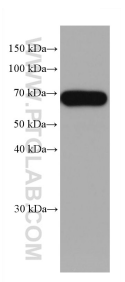
Selected Validation Data



human testis tissue were subjected to SDS PAGE followed by western blot with 67965-1-Ig (MFSD2 antibody) at dilution of 1:10000 incubated at room temperature for 1.5 hours.



human placenta tissue were subjected to SDS PAGE followed by western blot with 67965-1-Ig (MFSD2 antibody) at dilution of 1:10000 incubated at room temperature for 1.5 hours.



human testis tissue were subjected to SDS PAGE followed by western blot with 67965-1-Ig (MFSD2 antibody) at dilution of 1:5200 incubated at room temperature for 1.5 hours.