

For Research Use Only

MYD88 Monoclonal antibody

Catalog Number: 67969-1-Ig **55 Publications**



Basic Information

Catalog Number: 67969-1-Ig	GenBank Accession Number: BC013589	Purification Method: Protein A purification
Size: 150ul , Concentration: 1000 ug/ml by Nanodrop;	GeneID (NCBI): 4615	CloneNo.: 2E10D3
Source: Mouse	UNIPROT ID: Q99836	Recommended Dilutions: WB 1:2000-1:10000 IHC 1:250-1:1000 IF-P 1:200-1:800 IF/ICC 1:200-1:800
Isotype: IgG2b	Full Name: myeloid differentiation primary response gene (88)	
Immunogen Catalog Number: AG27659	Calculated MW: 33 kDa	
	Observed MW: 33 kDa	

Applications

Tested Applications: WB, IHC, IF/ICC, IF-P, ELISA	Positive Controls: WB : HepG2 cells, HL-60 cells, HSC-T6 cells, NIH/3T3 cells, pig spleen tissue, rabbit spleen tissue, Jurkat cells, Raji cells, K-562 cells IHC : human liver tissue, mouse liver tissue IF-P : mouse liver tissue, IF/ICC : A431 cells,
Cited Applications: WB, IHC, IF, IP	
Species Specificity: human, mouse, rat, pig, rabbit	
Cited Species: human, mouse, rat	
Note-IHC: suggested antigen retrieval with TE buffer pH 9.0; (*) Alternatively, antigen retrieval may be performed with citrate buffer pH 6.0	

Background Information

MYD88 is a cytosolic adapter protein that plays a central role in the innate and adaptive immune response. MYD88 is the key adaptor protein for the interleukin-1 receptor (IL-1R) and most Toll-like receptors (TLRs), which are essential for innate immunity and pathogen-associated molecular pattern recognition. Mutations in the MyD88 gene lead to the development of cancer in humans and mice suggesting that MyD88 also plays a cell autonomous role in tissue homeostasis.

Notable Publications

Author	Pubmed ID	Journal	Application
Ting Xu	36079919	Nutrients	WB
Shuming Li	36446234	Int Immunopharmacol	WB
Honghong Zhan	36552516	Antioxidants (Basel)	WB

Storage

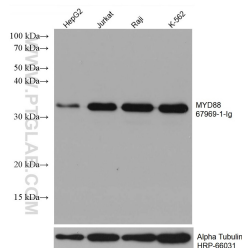
Storage:
Store at -20°C. Stable for one year after shipment.
Storage Buffer:
PBS with 0.02% sodium azide and 50% glycerol, pH7.3
Aliquoting is unnecessary for -20°C storage

*** 20ul sizes contain 0.1% BSA

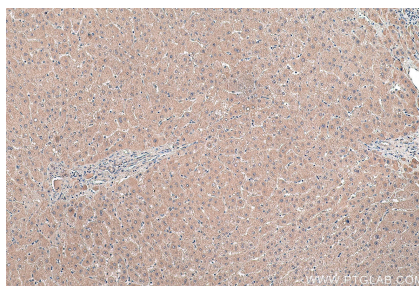
For technical support and original validation data for this product please contact:
T: 1 (888) 4PTGLAB (1-888-478-4522) (toll free in USA), or 1(312) 455-8498 (outside USA)
E: proteintech@ptglab.com
W: ptglab.com

This product is exclusively available under Proteintech Group brand and is not available to purchase from any other manufacturer.

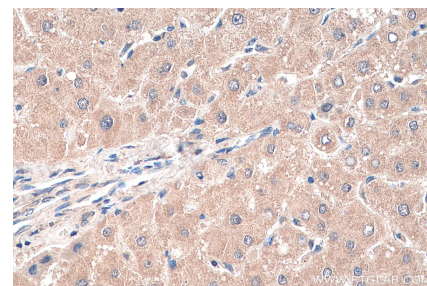
Selected Validation Data



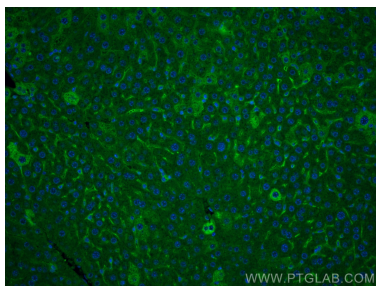
Various lysates were subjected to SDS PAGE followed by western blot with 67969-1-Ig (MYD88 antibody) at dilution of 1:5000 incubated at room temperature for 1.5 hours. The membrane was stripped and reblotted with HRP-conjugated Alpha Tubulin Monoclonal antibody (HRP-66031) as loading control.



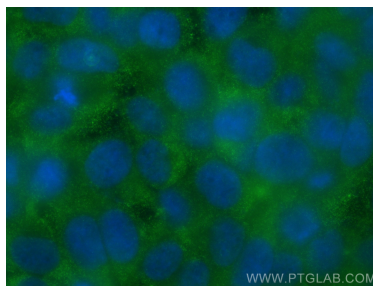
Immunohistochemical analysis of paraffin-embedded human liver tissue slide using 67969-1-Ig (MYD88 antibody) at dilution of 1:500 (under 10x lens). Heat mediated antigen retrieval with Tris-EDTA buffer (pH 9.0).



Immunohistochemical analysis of paraffin-embedded human liver tissue slide using 67969-1-Ig (MYD88 antibody) at dilution of 1:500 (under 40x lens). Heat mediated antigen retrieval with Tris-EDTA buffer (pH 9.0).



Immunofluorescent analysis of (4% PFA) fixed mouse liver tissue using MYD88 antibody (67969-1-Ig, Clone: 2E10D3) at dilution of 1:400 and CoraLite®488-Conjugated AffiniPure Goat Anti-Mouse IgG(H+L).



Immunofluorescent analysis of (-20°C Methanol) fixed A431 cells using MYD88 antibody (67969-1-Ig, Clone: 2E10D3) at dilution of 1:400 and CoraLite®488-Conjugated Goat Anti-Mouse IgG(H+L) (SA00013-1).