

For Research Use Only

LIMK1 Monoclonal antibody

Catalog Number: 67974-1-Ig **Featured Product**



Basic Information

Catalog Number: 67974-1-Ig	GenBank Accession Number: BC152982	Purification Method: Protein A purification
Size: 150ul , Concentration: 1000 µg/ml by Nanodrop;	GeneID (NCBI): 3984	CloneNo.: 2B11E9
Source: Mouse	Full Name: LIM domain kinase 1	Recommended Dilutions: WB 1:2000-1:10000 IF 1:500-1:2000
Isotype: IgG2a	Calculated MW: 647 aa, 73 kDa	
Immunogen Catalog Number: AG28862	Observed MW: 65 kDa	

Applications

Tested Applications:
IF, WB, ELISA

Species Specificity:
Human, rat, mouse, rabbit

Positive Controls:

WB : HeLa cells, MCF-7 cells, SH-SY5Y cells, pig brain tissue, A431 cells, HEK-293 cells, rabbit brain tissue, rat brain tissue, mouse brain tissue

IF : HeLa cells,

Background Information

LIMK1, also named LIMK, belongs to the protein kinase superfamily and TKL Ser/Thr protein kinase family. LIMK1 is a protein kinase which regulates actin filament dynamics. Phosphorylates and inactivates the actin binding/depolymerizing factor cofilin, thereby stabilizing the actin cytoskeleton. Isoform 3 has a dominant negative effect on actin cytoskeletal changes. LIMK1 may be involved in brain development. The antibody has no cross-reaction with LIMK2.

Storage

Storage:
Store at -20°C. Stable for one year after shipment.

Storage Buffer:
PBS with 0.02% sodium azide and 50% glycerol pH 7.3.

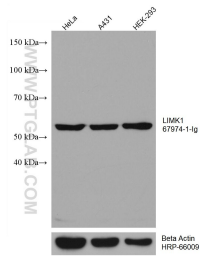
Aliquoting is unnecessary for -20°C storage

*** 20ul sizes contain 0.1% BSA

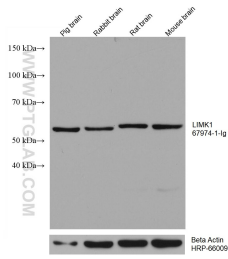
For technical support and original validation data for this product please contact:
T: 1 (888) 4PTGLAB (1-888-478-4522) (toll free in USA), or 1(312) 455-8498 (outside USA) E: proteintech@ptglab.com W: ptglab.com

This product is exclusively available under Proteintech Group brand and is not available to purchase from any other manufacturer.

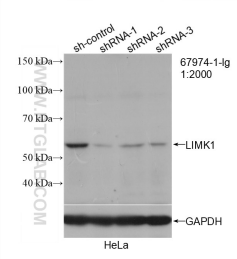
Selected Validation Data



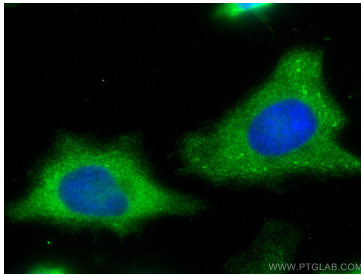
Various lysates were subjected to SDS PAGE followed by western blot with 67974-1-Ig (LIMK1 antibody) at dilution of 1:5000 incubated at room temperature for 1.5 hours. The membrane was stripped and reblotted with HRP-conjugated Beta Actin Monoclonal antibody (HRP-66009) as loading control.



Various lysates were subjected to SDS PAGE followed by western blot with 67974-1-Ig (LIMK1 antibody) at dilution of 1:5000 incubated at room temperature for 1.5 hours. The membrane was stripped and reblotted with HRP-conjugated Beta Actin Monoclonal antibody (HRP-66009) as loading control.



WB result of LIMK1 antibody (67974-1-Ig; 1:2000; incubated at room temperature for 1.5 hours) with sh-Control and sh-LIMK1 transfected HeLa cells.



Immunofluorescent analysis of (-20°C Methanol) fixed HeLa cells using LIMK1 antibody (67974-1-Ig, Clone: 2B11E9) at dilution of 1:1000 and CoraLite®488-Conjugated AffiniPure Goat Anti-Mouse IgG(H+L).