

For Research Use Only

# ARHGEF16 Monoclonal antibody, PBS Only

Catalog Number: 67975-1-PBS



## Basic Information

<b>Catalog Number:</b> 67975-1-PBS	<b>GenBank Accession Number:</b> BC002681	<b>Purification Method:</b> Protein A purification
<b>Size:</b> 100ug , Concentration: 1mg/ml by Nanodrop;	<b>GeneID (NCBI):</b> 27237	<b>CloneNo.:</b> 1D8E3
<b>Source:</b> Mouse	<b>UNIPROT ID:</b> Q5VV41	
<b>Isotype:</b> IgG2b	<b>Full Name:</b> Rho guanine exchange factor (GEF) 16	
<b>Immunogen Catalog Number:</b> AG28675	<b>Calculated MW:</b> 80 kDa	
	<b>Observed MW:</b> 80 kDa	

## Applications

**Tested Applications:**  
WB, IF/ICC, Indirect ELISA

**Species Specificity:**  
human

## Background Information

Small GTPases of the Rho family are critical regulators of various cellular functions including actin cytoskeleton organization, activation of kinase cascades, mitogenesis, transcriptional activation and stimulation of DNA synthesis. Rho proteins cycle between a biologically active GTP-bound state and an inactive GDP-bound state. Rho guanine nucleotide exchange factor (GEF) has a crucial role in activating small GTPase by exchange GDP for GTP. ARGEF16 is one of the multiple GEF members. Although the specific function of this protein is not known yet, it is thought to be involved in protein-protein and protein-lipid interactions.

## Storage

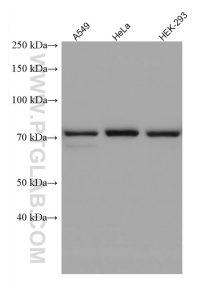
**Storage:**  
Store at -80°C.

**Storage Buffer:**  
PBS Only

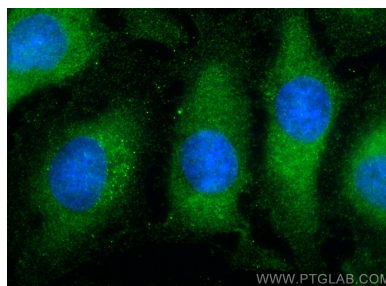
For technical support and original validation data for this product please contact:  
T: 1 (888) 4PTGLAB (1-888-478-4522) (toll free in USA), or 1(312) 455-8498 (outside USA)  
E: [proteintech@ptglab.com](mailto:proteintech@ptglab.com)  
W: [ptglab.com](http://ptglab.com)

This product is exclusively available under Proteintech Group brand and is not available to purchase from any other manufacturer.

## Selected Validation Data



Various lysates were subjected to SDS PAGE followed by western blot with 67975-1-Ig (ARHGEF16 antibody) at dilution of 1:10000 incubated at room temperature for 1.5 hours. This data was developed using the same antibody clone with 67975-1-PBS in a different storage buffer formulation.



Immunofluorescent analysis of (-20°C Ethanol) fixed HeLa cells using ARHGEF16 antibody (67975-1-Ig, Clone: 1D8E3 ) at dilution of 1:400 and Multi-rAb CoraLite ® Plus 488-Goat Anti-Mouse Recombinant Secondary Antibody (H+L) (RGAM002). This data was developed using the same antibody clone with 67975-1-PBS in a different storage buffer formulation.