

For Research Use Only

# RNASEH2A Monoclonal antibody

Catalog Number: 67976-1-Ig



## Basic Information

Catalog Number:	67976-1-Ig	GenBank Accession Number:	BC011748	Purification Method:	Protein A purification
Size:	150ul , Concentration: 1000 ug/ml by Nanodrop;	GeneID (NCBI):	10535	CloneNo.:	1A2E8
Source:	Mouse	UNIPROT ID:	O75792	Recommended Dilutions:	WB 1:2000-1:10000 IHC 1:500-1:2000
Isotype:	IgG2a	Full Name:	ribonuclease H2, subunit A		
Immunogen Catalog Number:	AG9256	Calculated MW:	299 aa, 33 kDa		

## Applications

### Tested Applications:

WB, IHC, ELISA

### Species Specificity:

human

**Note-IHC: suggested antigen retrieval with TE buffer pH 9.0; (\*) Alternatively, antigen retrieval may be performed with citrate buffer pH 6.0**

### Positive Controls:

WB : LNCaP cells, Hela cells, MCF-7 cells, HEK-293 cells, Jurkat cells, K-562 cells

IHC : human skin cancer tissue,

## Background Information

RNASEH2A(Ribonuclease H2 subunit A) is also named as RNASEH1, RNH1A and belongs to the RNase HII family and Eukaryotic subfamily. It is involved in the removal of the initiator RNA primers of Okazaki fragments, an essential step during chromosomal DNA replication of the lagging strand(PMID:9482870). It is an endonuclease that specifically degrades the RNA of RNA:DNA hybrids. Defects in RNASEH2A are the cause of Aicardi-Goutieres syndrome type 4 (AGS4).

## Storage

### Storage:

Store at -20°C. Stable for one year after shipment.

### Storage Buffer:

PBS with 0.02% sodium azide and 50% glycerol pH 7.3.

Aliquoting is unnecessary for -20°C storage

\*\*\* 20ul sizes contain 0.1% BSA

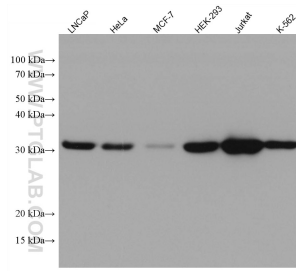
For technical support and original validation data for this product please contact:

T: 1 (888) 4PTGLAB (1-888-478-4522) (toll free in USA), or 1(312) 455-8498 (outside USA)

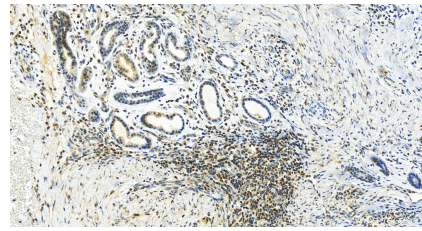
E: [proteintech@ptglab.com](mailto:proteintech@ptglab.com)  
W: [ptglab.com](http://ptglab.com)

This product is exclusively available under Proteintech Group brand and is not available to purchase from any other manufacturer.

## Selected Validation Data



Various lysates were subjected to SDS PAGE followed by western blot with 67976-1-Ig (RNASEH2A antibody) at dilution of 1:5000 incubated at room temperature for 1.5 hours.



Immunohistochemical analysis of paraffin-embedded skin cancer slide using 67976-1-Ig (RNASEH2A antibody) at dilution of 1:1000 (under 20x lens). Heat mediated antigen retrieval with Tris-EDTA buffer (pH 9.0).