

For Research Use Only

# SPTBN1 Monoclonal antibody

Catalog Number: 67978-1-Ig **1 Publications**



## Basic Information

<b>Catalog Number:</b> 67978-1-Ig	<b>GenBank Accession Number:</b> BC137282	<b>Purification Method:</b> Protein G purification
<b>Size:</b> 150ul, Concentration: 1000 ug/ml by Nanodrop;	<b>GeneID (NCBI):</b> 6711	<b>CloneNo.:</b> 1E1D1
<b>Source:</b> Mouse	<b>UNIPROT ID:</b> Q01082	<b>Recommended Dilutions:</b> WB 1:5000-1:50000 IHC 1:500-1:2000
<b>Isotype:</b> IgG1	<b>Full Name:</b> spectrin, beta, non-erythrocytic 1	
<b>Immunogen Catalog Number:</b> AG31713	<b>Calculated MW:</b> 2364 aa, 275 kDa	
	<b>Observed MW:</b> 250-275 kDa	

## Applications

<b>Tested Applications:</b> WB, IHC, ELISA	<b>Positive Controls:</b>
<b>Cited Applications:</b> IHC	<b>WB :</b> HeLa cells, mouse cerebellum tissue, HepG2 cells, Jurkat cells, pig brain, rabbit brain, rat brain, mouse brain, rat cerebellum
<b>Species Specificity:</b> Human, mouse, rat, rabbit, pig	<b>IHC :</b> human liver cancer tissue,
<b>Cited Species:</b> human	
<b>Note-IHC: suggested antigen retrieval with TE buffer pH 9.0; (*) Alternatively, antigen retrieval may be performed with citrate buffer pH 6.0</b>	

## Background Information

SPTBN1 is the non-erythrocytic form of  $\beta$ -spectrin or  $\beta$ -fodrin. Spectrins are members of the superfamily of F-actin cross linking proteins that are important as scaffolding proteins for protein sorting, cell adhesion, and migration. Reduced expression of SPTBN1 has been found to correlate with shorter survival of patients with hepatocellular cancer, pancreatic cancer and other malignancies of the gastrointestinal tract, suggesting tumor suppression ability of this protein.

## Notable Publications

Author	Pubmed ID	Journal	Application
Wenting Tang	37013511	BMC Cancer	IHC

## Storage

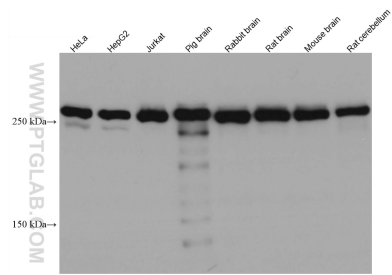
**Storage:**  
Store at -20°C.  
**Storage Buffer:**  
PBS with 0.02% sodium azide and 50% glycerol pH 7.3.  
Aliquoting is unnecessary for -20°C storage

\*\*\* 20ul sizes contain 0.1% BSA

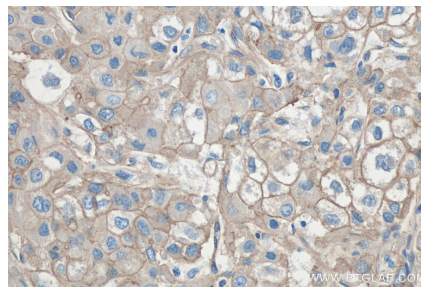
For technical support and original validation data for this product please contact:  
T: 1 (888) 4PTGLAB (1-888-478-4522) (toll free in USA), or 1(312) 455-8498 (outside USA)  
E: proteintech@ptglab.com  
W: ptglab.com

This product is exclusively available under Proteintech Group brand and is not available to purchase from any other manufacturer.

## Selected Validation Data



Various lysates were subjected to SDS PAGE followed by western blot with 67978-1-Ig (SPTBN1 antibody) at dilution of 1:10000 incubated at room temperature for 1.5 hours.



Immunohistochemical analysis of paraffin-embedded human liver cancer tissue slide using 67978-1-Ig (SPTBN1 antibody) at dilution of 1:1000 (under 10x lens). Heat mediated antigen retrieval with Tris-EDTA buffer (pH 9.0).