

# TEX14 Monoclonal antibody

Catalog Number: 67982-1-Ig

## Basic Information

<b>Catalog Number:</b> 67982-1-Ig	<b>GenBank Accession Number:</b> BC040526	<b>Purification Method:</b> Protein A purification
<b>Size:</b> 150ul , Concentration: 1000 ug/ml by Nanodrop;	<b>GeneID (NCBI):</b> 56155	<b>CloneNo.:</b> 1A11D6
<b>Source:</b> Mouse	<b>UNIPROT ID:</b> Q8IWB6	<b>Recommended Dilutions:</b> WB 1:5000-1:50000 IF-P 1:200-1:800
<b>Isotype:</b> IgG2a	<b>Full Name:</b> testis expressed 14	
<b>Immunogen Catalog Number:</b> AG13143	<b>Calculated MW:</b> 957aa,107 kDa; 1497aa,168 kDa	
	<b>Observed MW:</b> 180 kDa	

## Applications

<b>Tested Applications:</b> WB, IF-P, ELISA	<b>Positive Controls:</b>
<b>Species Specificity:</b> Human, mouse, rat, rabbit	<b>WB :</b> rat testis tissue, PC-3 cells, mouse testis tissue, rabbit testis tissue
	<b>IF-P :</b> mouse testis tissue,

## Background Information

Tex14 is required both for the formation of intercellular bridges during meiosis and for kinetochore-microtubule attachment during mitosis. Intercellular bridges are evolutionarily conserved structures that connect differentiating germ cells and are required for spermatogenesis and male fertility. Tex14 acts by promoting the conversion of midbodies into intercellular bridges via its interaction with CEP55: interaction with CEP55 inhibits the interaction between CEP55 and PDCD6IP/ALIX and TSG101, blocking cell abscission and leading to transform midbodies into intercellular bridges. Tex14 also plays a role during mitosis: recruited to kinetochores by PLK1 during early mitosis and regulates the maturation of the outer kinetochores and microtubule attachment.

## Storage

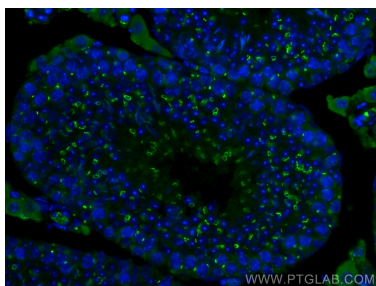
**Storage:**  
Store at -20°C.  
**Storage Buffer:**  
PBS with 0.02% sodium azide and 50% glycerol pH 7.3.  
Aliquoting is unnecessary for -20°C storage

\*\*\* 20ul sizes contain 0.1% BSA

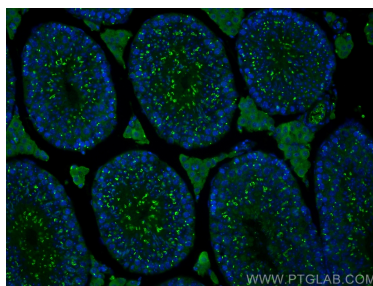
For technical support and original validation data for this product please contact:  
T: 1 (888) 4PTGLAB (1-888-478-4522) (toll free in USA), or 1(312) 455-8498 (outside USA)  
E: [proteintech@ptglab.com](mailto:proteintech@ptglab.com)  
W: [ptglab.com](http://ptglab.com)

This product is exclusively available under Proteintech Group brand and is not available to purchase from any other manufacturer.

## Selected Validation Data



Immunofluorescent analysis of (4% PFA) fixed mouse testis tissue using TEX14 antibody (67982-1-Ig, Clone: 1A11D6 ) at dilution of 1:400 and CoraLite®488-Conjugated Goat Anti-Mouse IgG(H+L).



Immunofluorescent analysis of (4% PFA) fixed mouse testis tissue using TEX14 antibody (67982-1-Ig, Clone: 1A11D6 ) at dilution of 1:400 and CoraLite®488-Conjugated Goat Anti-Mouse IgG(H+L).



rat testis tissue were subjected to SDS PAGE followed by western blot with 67982-1-Ig (TEX14 antibody) at dilution of 1:10000 incubated at room temperature for 1.5 hours.