

For Research Use Only

MON1B Monoclonal antibody

Catalog Number: 67985-1-Ig **Featured Product**



Basic Information

Catalog Number: 67985-1-Ig	GenBank Accession Number: BC024277	Purification Method: Protein A purification
Size: 150ul , Concentration: 1000 ug/ml by Nanodrop;	GeneID (NCBI): 22879	CloneNo.: 3E7C6
Source: Mouse	UNIPROT ID: Q7L1V2	Recommended Dilutions: WB 1:2000-1:10000 IF/ICC 1:200-1:800
Isotype: IgG2b	Full Name: MON1 homolog B (yeast)	
Immunogen Catalog Number: AG9920	Calculated MW: 547 aa, 59 kDa	
	Observed MW: 59 kDa	

Applications

Tested Applications: WB, IF/ICC, ELISA	Positive Controls:
Species Specificity: Human	WB : LNCaP cells, HeLa cells, A549 cells, HEK-293 cells, Jurkat cells, HepG2 cells, K-562 cells, SW480 cells, MCF-7 cells
	IF/ICC : HeLa cells,

Background Information

Vacuolar fusion protein MON1 homolog B (MON1B) is also named as HSRG1, KIAA0872 and SAND2, and belongs to the MON1/SAND family. The membrane recruitment of MON1B, a homolog of yeast MON1 protein in mammals, is essential for vesicular fusion of early endosomes (PMID:26987402).

Storage

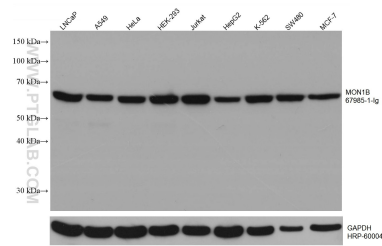
Storage:
Store at -20°C. Stable for one year after shipment.
Storage Buffer:
PBS with 0.02% sodium azide and 50% glycerol pH 7.3.
Aliquoting is unnecessary for -20°C storage

*** 20ul sizes contain 0.1% BSA

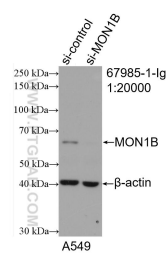
For technical support and original validation data for this product please contact:
T: 1 (888) 4PTGLAB (1-888-478-4522) (toll free in USA), or 1(312) 455-8498 (outside USA)
E: proteintech@ptglab.com
W: ptglab.com

This product is exclusively available under Proteintech Group brand and is not available to purchase from any other manufacturer.

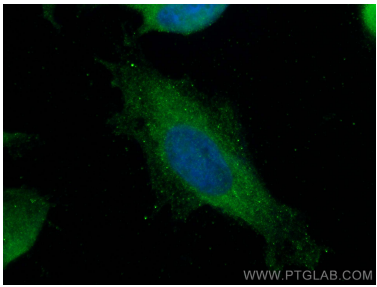
Selected Validation Data



Various lysates were subjected to SDS PAGE followed by western blot with 67985-1-Ig (MON1B antibody) at dilution of 1:5000 incubated at room temperature for 1.5 hours. The membrane was stripped and reblotted with HRP-conjugated GAPDH Monoclonal antibody (HRP-60004) as loading control.



WB result of MON1B antibody (67985-1-Ig: 1:20000; incubated at room temperature for 1.5 hours) with sh-Control and sh-MON1B transfected A549 cells.



Immunofluorescent analysis of (-20°C Methanol) fixed HeLa cells using MON1B antibody (67985-1-Ig, Clone: 3E7C6) at dilution of 1:400 and CoraLite®488-Conjugated Goat Anti-Mouse IgG(H+L).