

For Research Use Only

MON1B Monoclonal antibody, PBS Only



Catalog Number: 67985-1-PBS

Featured Product

Basic Information

Catalog Number:

67985-1-PBS

Size:

100ug, Concentration: 1 mg/ml by Nanodrop;

Source:

Mouse

Isotype:

IgG2b

Immunogen Catalog Number:

AG9920

GenBank Accession Number:

BC024277

GeneID (NCBI):

22879

UNIPROT ID:

Q7L1V2

Full Name:

MON1 homolog B (yeast)

Calculated MW:

547 aa, 59 kDa

Observed MW:

59 kDa

Purification Method:

Protein A purification

CloneNo.:

3E7C6

Applications

Tested Applications:

WB, IF, Indirect ELISA

Species Specificity:

Human

Background Information

Vacuolar fusion protein MON1 homolog B (MON1B) is also named as HSRG1, KIAA0872 and SAND2, and belongs to the MON1/SAND family. The membrane recruitment of MON1B, a homolog of yeast MON1 protein in mammals, is essential for vesicular fusion of early endosomes (PMID:26987402).

Storage

Storage:

Store at -80°C.

Storage Buffer:

PBS Only

For technical support and original validation data for this product please contact:

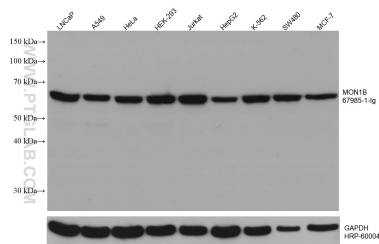
T: 1 (888) 4PTGLAB (1-888-478-4522) (toll free in USA), or 1(312) 455-8498 (outside USA)

E: proteintech@ptglab.com

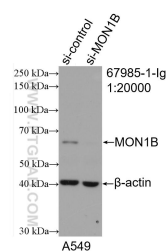
W: ptglab.com

This product is exclusively available under Proteintech Group brand and is not available to purchase from any other manufacturer.

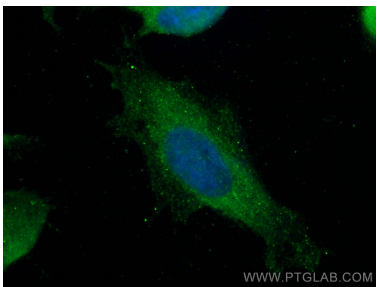
Selected Validation Data



Various lysates were subjected to SDS PAGE followed by western blot with 67985-1-Ig (MON1B antibody) at dilution of 1:5000 incubated at room temperature for 1.5 hours. The membrane was stripped and reblotted with HRP-conjugated GAPDH Monoclonal antibody (HRP-60004) as loading control. This data was developed using the same antibody clone with 67985-1-PBS in a different storage buffer formulation.



WB result of MON1B antibody (67985-1-Ig; 1:20000; incubated at room temperature for 1.5 hours) with sh-Control and sh-MON1B transfected A549 cells. This data was developed using the same antibody clone with 67985-1-PBS in a different storage buffer formulation.



Immunofluorescent analysis of (-20°C Methanol) fixed HeLa cells using MON1B antibody (67985-1-Ig, Clone: 3E7C6) at dilution of 1:400 and CoraLite®488-Conjugated AffiniPure Goat Anti-Mouse IgG(H+L). This data was developed using the same antibody clone with 67985-1-PBS in a different storage buffer formulation.