

For Research Use Only

MMP7 Monoclonal antibody, PBS Only (Detector)



Catalog Number: 67990-1-PBS

Basic Information

Catalog Number: 67990-1-PBS	GenBank Accession Number: BC003635	Purification Method: Protein A purification
Size: 100ug , Concentration: 1mg/ml by Nanodrop;	GeneID (NCBI): 4316	CloneNo.: 2E6D6
Source: Mouse	UNIPROT ID: P09237	
Isotype: IgG2a	Full Name: matrix metalloproteinase 7 (matrilysin, uterine)	
Immunogen Catalog Number: AG0550	Calculated MW: 29 kDa	
	Observed MW: 27-30 kDa	

Applications

Tested Applications:
WB, IHC, IF-P, Cytometric bead array, Indirect ELISA

Species Specificity:
human

Product Information

67990-1-PBS targets MMP7 as part of a matched antibody pair:

MP50369-1: 67990-2-PBS capture and 67990-1-PBS detection (validated in Cytometric bead array)

Unconjugated mouse monoclonal antibody pair in PBS only (BSA and azide free) storage buffer at a concentration of 1 mg/mL, ready for conjugation.

This conjugation ready format makes antibodies ideal for use in many applications including: ELISAs, multiplex assays requiring matched pairs, mass cytometry, and multiplex imaging applications. Antibody use should be optimized by the end user for each application and assay.

Storage

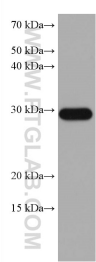
Storage:
Store at -80°C.

Storage Buffer:
PBS Only

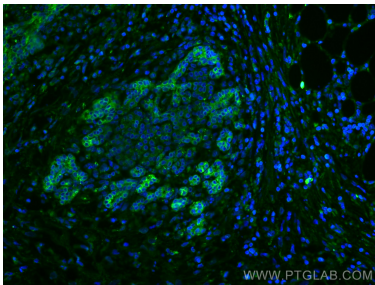
For technical support and original validation data for this product please contact:
T: 1 (888) 4PTGLAB (1-888-478-4522) (toll free in USA), or 1(312) 455-8498 (outside USA)
E: proteintech@ptglab.com
W: ptglab.com

This product is exclusively available under Proteintech Group brand and is not available to purchase from any other manufacturer.

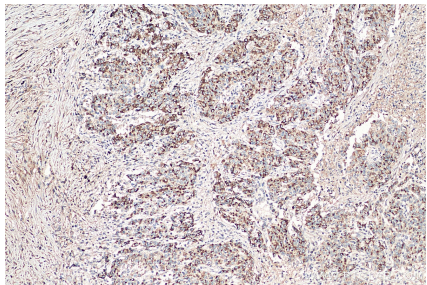
Selected Validation Data



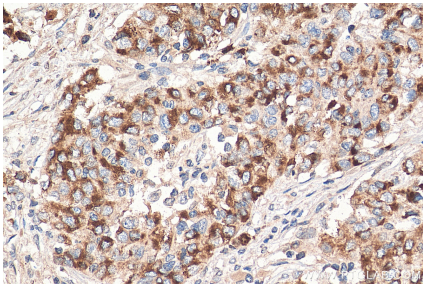
SKOV-3 cells were subjected to SDS PAGE followed by western blot with 67990-1-Ig (MMP7 antibody) at dilution of 1:5000 incubated at room temperature for 1.5 hours. This data was developed using the same antibody clone with 67990-1-PBS in a different storage buffer formulation.



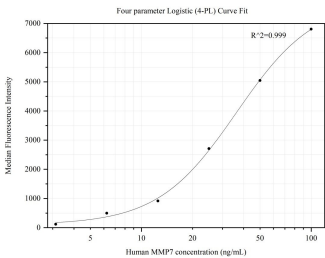
Immunofluorescent analysis of (4% PFA) fixed human pancreas cancer tissue using MMP7 antibody (67990-1-Ig, Clone: 2E6D6) at dilution of 1:400 and CoraLite@488-Conjugated AffiniPure Goat Anti-Mouse IgG(H+L). This data was developed using the same antibody clone with 67990-1-PBS in a different storage buffer formulation.



Immunohistochemical analysis of paraffin-embedded human stomach cancer tissue slide using 67990-1-Ig (MMP7 antibody) at dilution of 1:500 (under 10x lens). Heat mediated antigen retrieval with Tris-EDTA buffer (pH 9.0). This data was developed using the same antibody clone with 67990-1-PBS in a different storage buffer formulation.



Immunohistochemical analysis of paraffin-embedded human stomach cancer tissue slide using 67990-1-Ig (MMP7 antibody) at dilution of 1:500 (under 40x lens). Heat mediated antigen retrieval with Tris-EDTA buffer (pH 9.0). This data was developed using the same antibody clone with 67990-1-PBS in a different storage buffer formulation.



Cytometric bead array standard curve of MP50369-1, MMP7 Monoclonal Matched Antibody Pair, PBS Only. Capture antibody: 67990-2-PBS. Detection antibody: 67990-1-PBS. Standard:Ag0550. Range: 3.125-100 ng/mL.