

For Research Use Only

SLC30A2 Monoclonal antibody

Catalog Number: 67993-1-Ig 1 Publications



Basic Information

Catalog Number: 67993-1-Ig	GenBank Accession Number: BC006251	Purification Method: Protein G purification
Size: 150ul , Concentration: 1000 ug/ml by Nanodrop;	GeneID (NCBI): 7780	CloneNo.: 1D9E5
Source: Mouse	UNIPROT ID: Q9BRI3	Recommended Dilutions: WB 1:2000-1:12000 IHC 1:300-1:1200
Isotype: IgG1	Full Name: solute carrier family 30 (zinc transporter), member 2	
Immunogen Catalog Number: AG8232	Calculated MW: 323 aa, 35 kDa	
	Observed MW: 41 kDa	

Applications

Tested Applications: WB, IHC, ELISA	Positive Controls:
Cited Applications: WB	WB : MCF-7 cells, HaCaT cells, Caco-2 cells, HT-29 cells, HeLa cells, NCCIT cells, JAR cells, ATDC-5 cells
Species Specificity: Human, Mouse	IHC : human pancreas cancer tissue,
Cited Species: human, mouse	
Note-IHC: suggested antigen retrieval with TE buffer pH 9.0; (*) Alternatively, antigen retrieval may be performed with citrate buffer pH 6.0	

Background Information

SLC30A2, also named as the Zn transporter 2 gene (ZnT2), belongs to the cation diffusion facilitator (CDF) transporter (TC 2.A.4) family and SLC30A subfamily. It plays a role in the zinc ion transmembrane transport. Expression of SLC30A2 is restricted to secretory cells, such as acinar pancreatic cells, prostate epithelial cells, placental trophoblasts, Paneth cells, and mammary epithelial cells (MECs). SLC30A2 consists of six transmembrane domains with cytoplasmic N- and C-termini that contain numerous regulatory domains, and functions as a homo- or hetero- dimer to transport Zn into vesicles (PMID: 29476070). SLC30A2 has 2 isoforms with the molecular mass of 35 and 41 kDa.

Notable Publications

Author	Pubmed ID	Journal	Application
Guanghui Hou	39514658	Sci Adv	WB

Storage

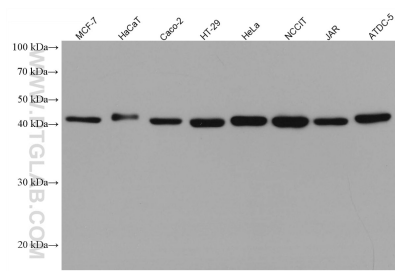
Storage:
Store at -20°C.
Storage Buffer:
PBS with 0.02% sodium azide and 50% glycerol pH 7.3.
Aliquoting is unnecessary for -20°C storage

*** 20ul sizes contain 0.1% BSA

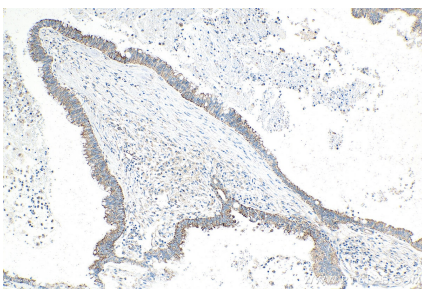
For technical support and original validation data for this product please contact:
T: 1 (888) 4PTGLAB (1-888-478-4522) (toll free in USA), or 1(312) 455-8498 (outside USA)
E: proteintech@ptglab.com
W: ptglab.com

This product is exclusively available under Proteintech Group brand and is not available to purchase from any other manufacturer.

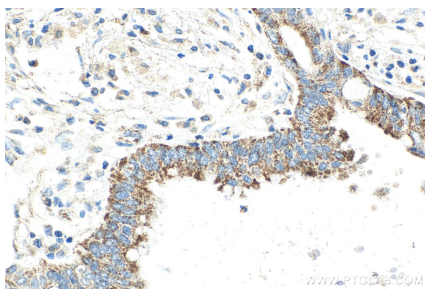
Selected Validation Data



Various lysates were subjected to SDS PAGE followed by western blot with 67993-1-Ig (SLC30A2 antibody) at dilution of 1:6000 incubated at room temperature for 1.5 hours.



Immunohistochemical analysis of paraffin-embedded human pancreas cancer tissue slide using 67993-1-Ig (SLC30A2 antibody) at dilution of 1:600 (under 10x lens). Heat mediated antigen retrieval with Tris-EDTA buffer (pH 9.0).



Immunohistochemical analysis of paraffin-embedded human pancreas cancer tissue slide using 67993-1-Ig (SLC30A2 antibody) at dilution of 1:600 (under 40x lens). Heat mediated antigen retrieval with Tris-EDTA buffer (pH 9.0).