

For Research Use Only

RPA2 Monoclonal antibody

Catalog Number: 67999-1-Ig



Basic Information

Catalog Number: 67999-1-Ig	GenBank Accession Number: BC001630	Purification Method: Protein G purification
Size: 150ul , Concentration: 1000 ug/ml by Nanodrop;	GeneID (NCBI): 6118	CloneNo.: 1B9H11
Source: Mouse	UNIPROT ID: P15927	Recommended Dilutions: WB 1:5000-1:50000 IF/ICC 1:2000-1:8000
Isotype: IgG1	Full Name: replication protein A2, 32kDa	
Immunogen Catalog Number: AG24783	Calculated MW: 29 kDa	
	Observed MW: 30 kDa	

Applications

Tested Applications: WB, IF/ICC, ELISA	Positive Controls:
Species Specificity: human, mouse, rat, pig, rabbit	WB : LNCaP cells, pig spleen tissue, rat testis tissue, mouse testis tissue, rabbit spleen tissue, Hela cells, MOLT-4 cells, Jurkat cells, THP-1 cells
	IF/ICC : A431 cells,

Background Information

RPA2, a subunit of the heterotrimeric replication protein A (RPA) complex, is overexpressed in various cancers. RPA2 is a major target for upstream kinases, including CDKs and the three PIKKs (ATR, ataxia-telangiectasia mutated [ATM], and DNA-PK). RPA2 comprises multiple critical Ser/Thr residues that are phosphorylated in sequential order in response to genotoxic stress.

Storage

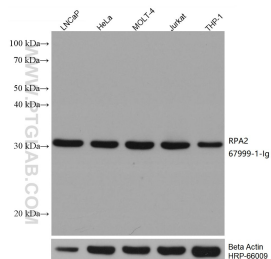
Storage:
Store at -20°C. Stable for one year after shipment.
Storage Buffer:
PBS with 0.02% sodium azide and 50% glycerol pH 7.3.
Aliquoting is unnecessary for -20°C storage

*** 20ul sizes contain 0.1% BSA

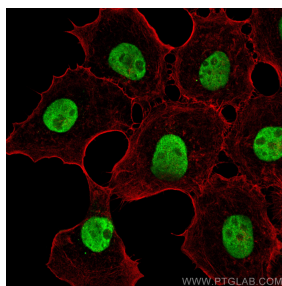
For technical support and original validation data for this product please contact:
T: 1 (888) 4PTGLAB (1-888-478-4522) (toll free in USA), or 1(312) 455-8498 (outside USA)
E: proteintech@ptglab.com
W: ptglab.com

This product is exclusively available under Proteintech Group brand and is not available to purchase from any other manufacturer.

Selected Validation Data



Various lysates were subjected to SDS PAGE followed by western blot with 67999-1-Ig (RPA2 antibody) at dilution of 1:20000 incubated at room temperature for 1.5 hours. The membrane was stripped and reblotted with HRP-conjugated Beta Actin Monoclonal antibody (HRP-66009) as loading control.



Immunofluorescent analysis of (4% PFA) fixed A431 cells using RPA2 antibody (67999-1-Ig, Clone: 1B9H11) at dilution of 1:4000 and CoraLite®488-Conjugated AffiniPure Goat Anti-Mouse IgG(H+L), (CL594-Phalloidin, red).