

For Research Use Only

BCAS2 Monoclonal antibody

Catalog Number: 68003-1-Ig



Basic Information

Catalog Number: 68003-1-Ig	GenBank Accession Number: BC005285	Purification Method: Protein G purification
Size: 150ul , Concentration: 1000 µg/ml by Nanodrop;	GeneID (NCBI): 10286	CloneNo.: 2A12G1
Source: Mouse	Full Name: breast carcinoma amplified sequence WB 1:2000-1:10000 2	Recommended Dilutions:
Isotype: IgG1	Calculated MW: 26 kDa	
Immunogen Catalog Number: AG21309	Observed MW: 28 kDa	

Applications

Tested Applications:

WB, ELISA

Species Specificity:

Human, mouse, rat

Positive Controls:

WB : HepG2 cells, LNCaP cells, HeLa cells, HEK-293 cells, Jurkat cells, K-562 cells, HSC-T6 cells, NIH/3T3 cells

Background Information

Breast carcinoma amplified sequence 2 (BCAS2) is preferentially known as pre-mRNA splicing factor SPF27 and was originally characterized as an up-regulated gene by amplification in human breast cancer cells. BCAS2 has been shown to be involved in DNA damage repair through the replication protein A (RPA) complex.

Storage

Storage:

Store at -20°C.

Storage Buffer:

PBS with 0.02% sodium azide and 50% glycerol pH 7.3.

Aliquoting is unnecessary for -20°C storage

*** 20ul sizes contain 0.1% BSA

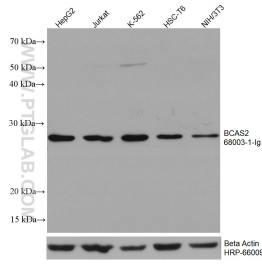
For technical support and original validation data for this product please contact:

T: 1 (888) 4PTGLAB (1-888-478-4522) (toll free
in USA), or 1(312) 455-8498 (outside USA)

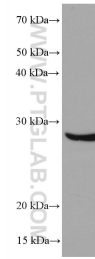
E: proteintech@ptglab.com
W: ptglab.com

This product is exclusively available under Proteintech Group brand and is not available to purchase from any other manufacturer.

Selected Validation Data



HepG2 cells were subjected to SDS PAGE followed by western blot with 68003-1-Ig (BCAS2 antibody) at dilution of 1:5000 incubated at room temperature for 1.5 hours. The membrane was stripped and reblotted with HRP-conjugated Beta Actin Monoclonal antibody (HRP-66009) as loading control.



LNCaP cells were subjected to SDS PAGE followed by western blot with 68003-1-Ig (BCAS2 antibody) at dilution of 1:5000 incubated at room temperature for 1.5 hours.