

For Research Use Only

# GMEB2 Monoclonal antibody

Catalog Number: 68010-1-Ig

Featured Product



## Basic Information

Catalog Number:

68010-1-Ig

Size:

150ul, Concentration: 1000 ug/ml by Nanodrop;

Source:

Mouse

Isotype:

IgG1

Immunogen Catalog Number:

AG31393

GenBank Accession Number:

BC036305

GeneID (NCBI):

26205

UNIPROT ID:

Q9UKD1

Full Name:

glucocorticoid modulatory element binding protein 2

Calculated MW:

530 aa, 56 kDa

Observed MW:

68 kDa

Purification Method:

Protein G purification

CloneNo.:

2H10H8

Recommended Dilutions:

WB 1:2000-1:10000

## Applications

Tested Applications:

WB, ELISA

Species Specificity:

Human, mouse, rat

Positive Controls:

WB : HeLa cells, MCF-7 cells, Jurkat cells, RAW 264.7 cells, HEK-293 cells, K-562 cells, PC-12 cells, HSC-T6 cells, NIH/3T3 cells

## Background Information

GMEB-2 (glucocorticoid modulatory element-binding protein 2), also known as PIF79 (Parvovirus initiation factor p79) or P79PIF, is a DNA-binding protein that plays a crucial role in modulating transcription upon activation by steroid hormones. GMEB-2 is ubiquitously expressed with preferential expression in developmentally important tissues.

## Storage

Storage:

Store at -20°C. Stable for one year after shipment.

Storage Buffer:

PBS with 0.02% sodium azide and 50% glycerol pH 7.3.

Aliquoting is unnecessary for -20°C storage

\*\*\* 20ul sizes contain 0.1% BSA

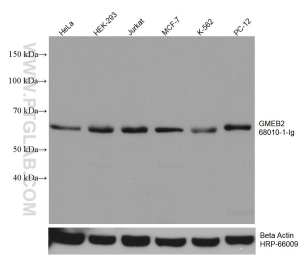
For technical support and original validation data for this product please contact:

T: 1 (888) 4PTGLAB (1-888-478-4522) (toll free in USA), or 1(312) 455-8498 (outside USA)

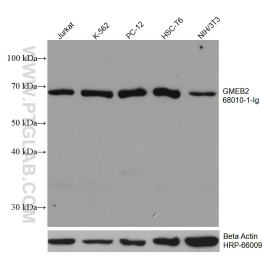
E: [proteintech@ptglab.com](mailto:proteintech@ptglab.com)  
W: [ptglab.com](http://ptglab.com)

This product is exclusively available under Proteintech Group brand and is not available to purchase from any other manufacturer.

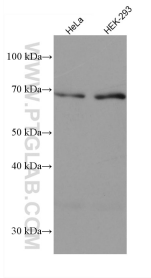
Selected Validation Data



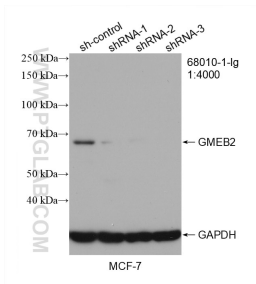
HeLa cells were subjected to SDS PAGE followed by western blot with 68010-1-Ig (GMEB2 antibody) at dilution of 1:5000 incubated at room temperature for 1.5 hours. The membrane was stripped and reblotted with HRP-conjugated Beta Actin Monoclonal antibody (HRP-66009) as loading control.



Various lysates were subjected to SDS PAGE followed by western blot with 68010-1-Ig (GMEB2 antibody) at dilution of 1:5000 incubated at room temperature for 1.5 hours. The membrane was stripped and reblotted with HRP-conjugated Beta Actin Monoclonal antibody (HRP-66009) as loading control.



Various lysates were subjected to SDS PAGE followed by western blot with 68010-1-Ig (GMEB2 antibody) at dilution of 1:5000 incubated at room temperature for 1.5 hours.



WB result of GMEB2 antibody (68010-1-Ig; 1:4000; incubated at room temperature for 1.5 hours) with sh-Control and sh-GMEB2 transfected MCF-7 cells.