

For Research Use Only

GMEB2 Monoclonal antibody, PBS Only



Catalog Number: 68010-1-PBS

Featured Product

Basic Information

Catalog Number:

68010-1-PBS

Size:

100ug, Concentration: 1 mg/ml by Nanodrop;

Source:

Mouse

Isotype:

IgG1

Immunogen Catalog Number:

AG31393

GenBank Accession Number:

BC036305

GeneID (NCBI):

26205

UNIPROT ID:

Q9UKD1

Full Name:

glucocorticoid modulatory element binding protein 2

Calculated MW:

530 aa, 56 kDa

Observed MW:

68 kDa

Purification Method:

Protein G purification

CloneNo.:

2H10H8

Applications

Tested Applications:

WB, Indirect ELISA

Species Specificity:

Human, mouse, rat

Background Information

GMEB-2 (glucocorticoid modulatory element-binding protein 2), also known as PIF 79 (Parvovirus initiation factor p79) or P79PIF, is a DNA-binding protein that plays a crucial role in modulating transcription upon activation by steroid hormones. GMEB-2 is ubiquitously expressed with preferential expression in developmentally important tissues.

Storage

Storage:

Store at -80°C.

Storage Buffer:

PBS Only

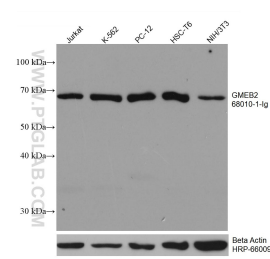
For technical support and original validation data for this product please contact:

T: 1 (888) 4PTGLAB (1-888-478-4522) (toll free in USA), or 1(312) 455-8498 (outside USA)

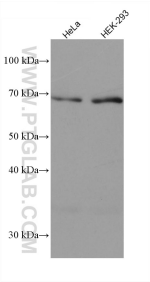
E: proteintech@ptglab.com
W: ptglab.com

This product is exclusively available under Proteintech Group brand and is not available to purchase from any other manufacturer.

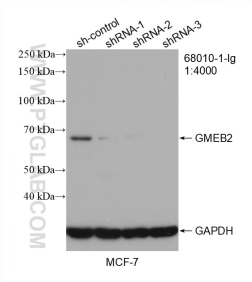
Selected Validation Data



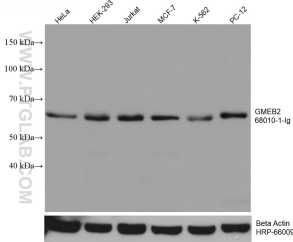
Various lysates were subjected to SDS PAGE followed by western blot with 68010-1-Ig (GMEB2 antibody) at dilution of 1:5000 incubated at room temperature for 1.5 hours. The membrane was stripped and reblotted with HRP-conjugated Beta Actin Monoclonal antibody (HRP-66009) as loading control. This data was developed using the same antibody clone with 68010-1-PBS in a different storage buffer formulation.



Various lysates were subjected to SDS PAGE followed by western blot with 68010-1-Ig (GMEB2 antibody) at dilution of 1:5000 incubated at room temperature for 1.5 hours. This data was developed using the same antibody clone with 68010-1-PBS in a different storage buffer formulation.



WB result of GMEB2 antibody (68010-1-Ig; 1:4000; incubated at room temperature for 1.5 hours) with sh-Control and sh-GMEB2 transfected MCF-7 cells. This data was developed using the same antibody clone with 68010-1-PBS in a different storage buffer formulation.



HeLa cells were subjected to SDS PAGE followed by western blot with 68010-1-Ig (GMEB2 antibody) at dilution of 1:5000 incubated at room temperature for 1.5 hours. The membrane was stripped and reblotted with HRP-conjugated Beta Actin Monoclonal antibody (HRP-66009) as loading control. This data was developed using the same antibody clone with 68010-1-PBS in a different storage buffer formulation.