

For Research Use Only

# RALY Monoclonal antibody

Catalog Number: 68011-1-Ig



## Basic Information

<b>Catalog Number:</b> 68011-1-Ig	<b>GenBank Accession Number:</b> BC103753	<b>Purification Method:</b> Protein G purification
<b>Size:</b> 150ul , Concentration: 1000 µg/ml by Nanodrop;	<b>GeneID (NCBI):</b> 22913	<b>CloneNo.:</b> 2B10C3
<b>Source:</b> Mouse	<b>Full Name:</b> RNA binding protein, autoantigenic (hnRNP-associated with lethal yellow homolog (mouse))	<b>Recommended Dilutions:</b> WB 1:5000-1:50000 IHC 1:1000-1:4000 IF 1:200-1:800
<b>Isotype:</b> IgG1	<b>Calculated MW:</b> 307 aa, 33 kDa	
<b>Immunogen Catalog Number:</b> AG12250	<b>Observed MW:</b> 30-37 kDa	

## Applications

### Tested Applications:

IF, IHC, WB, ELISA

### Species Specificity:

Human

**Note-IHC: suggested antigen retrieval with TE buffer pH 9.0; (\*) Alternatively, antigen retrieval may be performed with citrate buffer pH 6.0**

### Positive Controls:

WB : LNCaP cells, HeLa cells, HepG2 cells, Jurkat cells, K-562 cells

IHC : human stomach cancer tissue,

IF : A431 cells,

## Background Information

RNA-binding protein RALY is a protein that in humans is encoded by the RALY gene. In infectious mononucleosis, anti-EBNA-1 antibodies are produced which cross-react with multiple normal human proteins. The cross-reactivity is due to anti-gly/ala antibodies that cross-react with host proteins containing configurations like those in the EBNA-1 repeat. One such antigen is RALY which is a member of the heterogeneous nuclear ribonucleoprotein gene family.

## Storage

### Storage:

Store at -20°C. Stable for one year after shipment.

### Storage Buffer:

PBS with 0.02% sodium azide and 50% glycerol pH 7.3.

Aliquoting is unnecessary for -20°C storage

\*\*\* 20ul sizes contain 0.1% BSA

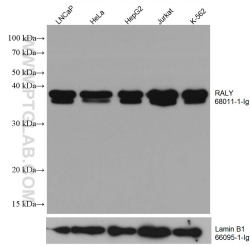
For technical support and original validation data for this product please contact:

T: 1 (888) 4PTGLAB (1-888-478-4522) (toll free in USA), or 1(312) 455-8498 (outside USA)

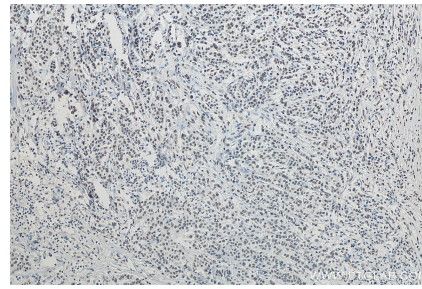
E: proteintech@ptglab.com  
W: ptglab.com

This product is exclusively available under Proteintech Group brand and is not available to purchase from any other manufacturer.

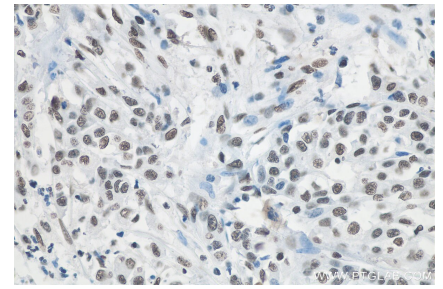
## Selected Validation Data



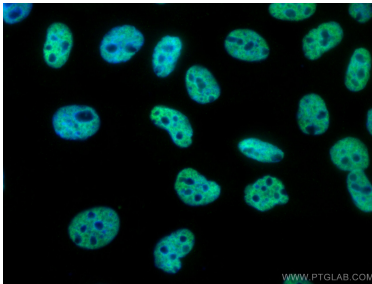
LNCaP cells were subjected to SDS PAGE followed by western blot with 68011-1-Ig (RALY antibody) at dilution of 1:20000 incubated at room temperature for 1.5 hours. The membrane was stripped and reblotted with Lamin B1 Monoclonal antibody (66095-1-Ig) as loading control.



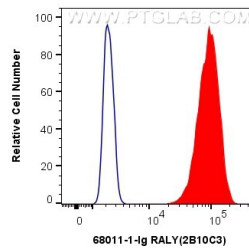
Immunohistochemical analysis of paraffin-embedded human stomach cancer tissue slide using 68011-1-Ig (RALY antibody) at dilution of 1:2000 (under 10x lens). Heat mediated antigen retrieval with Tris-EDTA buffer (pH 9.0).



Immunohistochemical analysis of paraffin-embedded human stomach cancer tissue slide using 68011-1-Ig (RALY antibody) at dilution of 1:2000 (under 40x lens). Heat mediated antigen retrieval with Tris-EDTA buffer (pH 9.0).



Immunofluorescent analysis of (4% PFA) fixed A431 cells using RALY antibody (68011-1-Ig, Clone: 2B10C3) at dilution of 1:400 and CoraLite@488-Conjugated AffiniPure Goat Anti-Mouse IgG(H+L).



1X10<sup>6</sup> A431 cells were intracellularly stained with 0.4 ug Anti-Human RALY (68011-1-Ig, Clone:2B10C3) and CoraLite@488-Conjugated AffiniPure Goat Anti-Mouse IgG(H+L) at dilution 1:1000 (red), or 0.4 ug Mouse IgG1 Isotype Control (MOPC-21) (65124-1-Ig, Clone: MOPC-21) (blue). Cells were fixed and permeabilized with Transcription Factor Staining Buffer Kit (PF00011).