

For Research Use Only

RALY Monoclonal antibody, PBS Only

Catalog Number: 68011-1-PBS



Basic Information

Catalog Number:

68011-1-PBS

Size:

100ug , Concentration: 1mg/ml by Nanodrop;

Source:

Mouse

Isotype:

IgG1

Immunogen Catalog Number:

AG12250

GenBank Accession Number:

BC103753

GeneID (NCBI):

22913

UNIPROT ID:

Q9UKM9

Full Name:

RNA binding protein, autoantigenic (hnRNP-associated with lethal yellow homolog (mouse))

Calculated MW:

307 aa, 33 kDa

Observed MW:

30-37 kDa

Purification Method:

Protein G purification

CloneNo.:

2B10C3

Applications

Tested Applications:

Indirect ELISA, IF/ICC, IHC, WB

Species Specificity:

human

Background Information

RNA-binding protein RALY is a protein that in humans is encoded by the RALY gene. In infectious mononucleosis, anti-EBNA-1 antibodies are produced which cross-react with multiple normal human proteins. The cross-reactivity is due to anti-gly/ala antibodies that cross-react with host proteins containing configurations like those in the EBNA-1 repeat. One such antigen is RALY which is a member of the heterogeneous nuclear ribonucleoprotein gene family.

Storage

Storage:

Store at -80°C.

Storage Buffer:

PBS Only

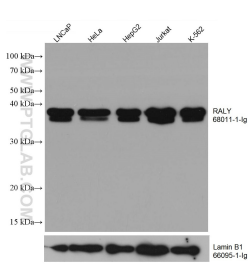
For technical support and original validation data for this product please contact:

T: 1 (888) 4PTGLAB (1-888-478-4522) (toll free in USA), or 1(312) 455-8498 (outside USA)

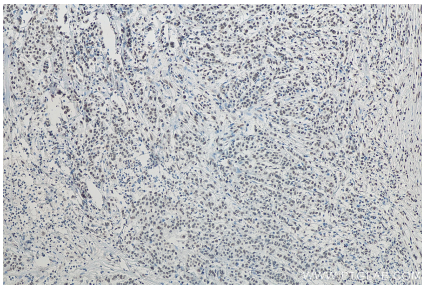
E: proteintech@ptglab.com
W: ptglab.com

This product is exclusively available under Proteintech Group brand and is not available to purchase from any other manufacturer.

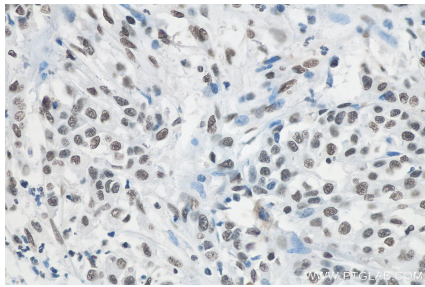
Selected Validation Data



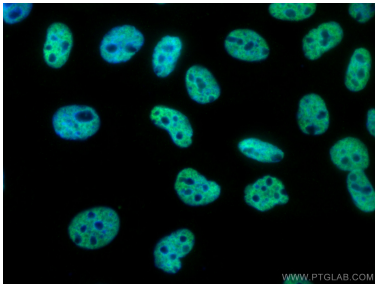
LNCaP cells were subjected to SDS PAGE followed by western blot with 68011-1-Ig (RALY antibody) at dilution of 1:20000 incubated at room temperature for 1.5 hours. The membrane was stripped and reblotted with Lamin B1 Monoclonal antibody (66095-1-Ig) as loading control. This data was developed using the same antibody clone with 68011-1-PBS in a different storage buffer formulation.



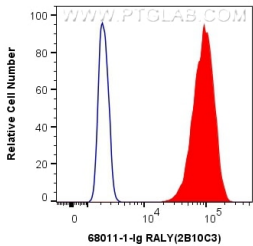
Immunohistochemical analysis of paraffin-embedded human stomach cancer tissue slide using 68011-1-Ig (RALY antibody) at dilution of 1:2000 (under 10x lens). Heat mediated antigen retrieval with Tris-EDTA buffer (pH 9.0). This data was developed using the same antibody clone with 68011-1-PBS in a different storage buffer formulation.



Immunohistochemical analysis of paraffin-embedded human stomach cancer tissue slide using 68011-1-Ig (RALY antibody) at dilution of 1:2000 (under 40x lens). Heat mediated antigen retrieval with Tris-EDTA buffer (pH 9.0). This data was developed using the same antibody clone with 68011-1-PBS in a different storage buffer formulation.



Immunofluorescent analysis of (4% PFA) fixed A431 cells using RALY antibody (68011-1-Ig, Clone: 2B10C3) at dilution of 1:400 and CoraLite@488-Conjugated AffiniPure Goat Anti-Mouse IgG(H+L). This data was developed using the same antibody clone with 68011-1-PBS in a different storage buffer formulation.



1X10⁶ A431 cells were intracellularly stained with 0.4 ug Anti-Human RALY (68011-1-Ig, Clone:2B10C3) and CoraLite@488-Conjugated AffiniPure Goat Anti-Mouse IgG(H+L) at dilution 1:1000 (red), or 0.4 ug Mouse IgG1 Isotype Control (MOPC-21) (65124-1-Ig, Clone: MOPC-21) (blue). Cells were fixed and permeabilized with Transcription Factor Staining Buffer Kit (PF00011). This data was developed using the same antibody clone with 68011-1-PBS in a

