

For Research Use Only

# RAB39B Monoclonal antibody, PBS Only



Catalog Number: 68014-1-PBS

## Basic Information

<b>Catalog Number:</b> 68014-1-PBS	<b>GenBank Accession Number:</b> BC009714	<b>Purification Method:</b> Protein A purification
<b>Size:</b> 100ug , Concentration: 1 mg/ml by Nanodrop;	<b>GeneID (NCBI):</b> 116442	<b>CloneNo.:</b> 2F4F7
<b>Source:</b> Mouse	<b>UNIPROT ID:</b> Q96DA2	
<b>Isotype:</b> IgG2b	<b>Full Name:</b> RAB39B, member RAS oncogene family	
<b>Immunogen Catalog Number:</b> AG27170	<b>Calculated MW:</b> 213 aa, 25 kDa	
	<b>Observed MW:</b> 25 kDa	

## Applications

**Tested Applications:**  
WB, Indirect ELISA

**Species Specificity:**  
Human, mouse, rat, rabbit, pig

## Background Information

RAB39B is a member of the RAB GTPase family with a putative role in vesicle trafficking. RAB39B is predominantly expressed in neuronal cells and is localized to the endoplasmic reticulum, Golgi and trans-Golgi recycling endosomes. Several reports suggested that RAB39B may regulate protein trafficking and the PI3K-AKT-mTOR pathway. Mutations in RAB39B are known to be associated with X-linked intellectual disability (XLID), Parkinson's disease, and autism.

## Storage

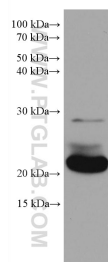
**Storage:**  
Store at -80°C.

**Storage Buffer:**  
PBS Only

For technical support and original validation data for this product please contact:  
T: 1 (888) 4PTGLAB (1-888-478-4522) (toll free in USA), or 1(312) 455-8498 (outside USA)  
E: [proteintech@ptglab.com](mailto:proteintech@ptglab.com)  
W: [ptglab.com](http://ptglab.com)

This product is exclusively available under Proteintech Group brand and is not available to purchase from any other manufacturer.

## Selected Validation Data



rabbit brain tissue were subjected to SDS PAGE followed by western blot with 68014-1-Ig (RAB39B antibody) at dilution of 1:20000 incubated at room temperature for 1.5 hours. This data was developed using the same antibody clone with 68014-1-PBS in a different storage buffer formulation.