

For Research Use Only

ALDH1L1 Monoclonal antibody

Catalog Number: 68018-1-Ig



Basic Information

Catalog Number: 68018-1-Ig	GenBank Accession Number: BC027241	Purification Method: Protein A purification
Size: 150ul, Concentration: 500 ug/ml by Nanodrop;	GeneID (NCBI): 10840	CloneNo.: 1C1A3
Source: Mouse	UNIPROT ID: O75891	Recommended Dilutions: WB 1:5000-1:50000 IHC 1:16000-1:64000 IF-Fro 1:200-1:800
Isotype: IgG1	Full Name: aldehyde dehydrogenase 1 family, member L1	
Immunogen Catalog Number: AG13190	Calculated MW: 99 kDa	
	Observed MW: 100 kDa	

Applications

Tested Applications: WB, IHC, IF-Fro, ELISA	Positive Controls:
Species Specificity: human, mouse, rat, pig	WB : human colostrum, pig liver tissue, rat liver tissue, mouse liver tissue
Note-IHC: suggested antigen retrieval with TE buffer pH 9.0; (*) Alternatively, antigen retrieval may be performed with citrate buffer pH 6.0	IHC : mouse brain tissue,
	IF-Fro : mouse brain tissue,

Background Information

Aldehyde dehydrogenase 1 family member L1 (ALDH1L1), belongs to the aldehyde dehydrogenase family of proteins and is responsible for formate oxidation in vivo. Loss of ALDH1L1 is associated with decreased apoptosis, increased cell motility, and cancer progression. ALDH1L1 catalyzes the conversion of 10-formyltetrahydrofolate, nicotinamide adenine dinucleotide phosphate (NADP⁺), and water to tetrahydrofolate, NADPH, and carbon dioxide. ALDH1L1 has some isoforms with MW of 99, 88 and 55 kDa.

Storage

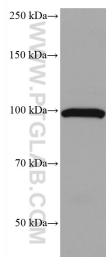
Storage:
Store at -20°C. Stable for one year after shipment.
Storage Buffer:
PBS with 0.02% sodium azide and 50% glycerol, pH7.3
Aliquoting is unnecessary for -20°C storage

*** 20ul sizes contain 0.1% BSA

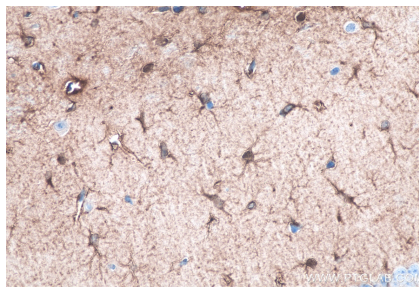
For technical support and original validation data for this product please contact:
T: 1 (888) 4PTGLAB (1-888-478-4522) (toll free in USA), or 1(312) 455-8498 (outside USA)
E: proteintech@ptglab.com
W: ptglab.com

This product is exclusively available under Proteintech Group brand and is not available to purchase from any other manufacturer.

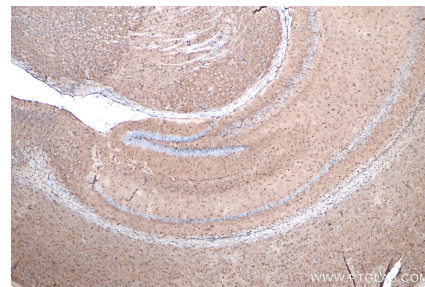
Selected Validation Data



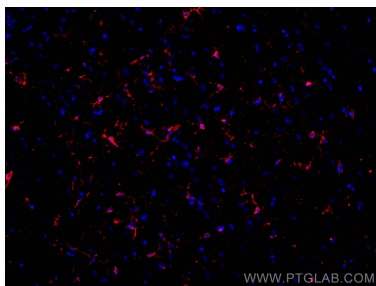
human milk were subjected to SDS PAGE followed by western blot with 68018-1-Ig (ALDH1L1 antibody) at dilution of 1:20000 incubated at room temperature for 1.5 hours.



Immunohistochemical analysis of paraffin-embedded mouse brain tissue slide using 68018-1-Ig (ALDH1L1 antibody) at dilution of 1:32000 (under 40x lens). Heat mediated antigen retrieval with Tris-EDTA buffer (pH 9.0).



Immunohistochemical analysis of paraffin-embedded mouse brain tissue slide using 68018-1-Ig (ALDH1L1 antibody) at dilution of 1:32000 (under 4x lens). Heat mediated antigen retrieval with Tris-EDTA buffer (pH 9.0).



Immunofluorescent analysis of (4% PFA) fixed frozen OCT-embedded mouse brain tissue using ALDH1L1 antibody (68018-1-Ig, Clone: 1C1A3) at dilution of 1:400 and Coralite® 594-Conjugated AffiniPure Goat Anti-Mouse IgG(H+L) (SA00013-3).