

For Research Use Only

# ALDH1L1 Monoclonal antibody, PBS Only

Catalog Number: 68018-1-PBS



## Basic Information

Catalog Number:

68018-1-PBS

Size:

100ug, Concentration: 1mg/ml by Nanodrop;

Source:

Mouse

Isotype:

IgG1

Immunogen Catalog Number:

AG13190

GenBank Accession Number:

BC027241

GeneID (NCBI):

10840

UNIPROT ID:

O75891

Full Name:

aldehyde dehydrogenase 1 family, member L1

Calculated MW:

99 kDa

Observed MW:

100 kDa

Purification Method:

Protein A purification

CloneNo.:

1C1A3

## Applications

Tested Applications:

WB, IHC, IF-Fro, ELISA

Species Specificity:

human, mouse, rat, pig

## Background Information

Aldehyde dehydrogenase 1 family member L1 (ALDH1L1), belongs to the aldehyde dehydrogenase family of proteins and is responsible for formate oxidation in vivo. Loss of ALDH1L1 is associated with decreased apoptosis, increased cell motility, and cancer progression. ALDH1L1 catalyzes the conversion of 10-formyltetrahydrofolate, nicotinamide adenine dinucleotide phosphate (NADP<sup>+</sup>), and water to tetrahydrofolate, NADPH, and carbon dioxide. ALDH1L1 has some isoforms with MW of 99, 88 and 55 kDa.

## Storage

Storage:

Store at -80°C.

Storage Buffer:

PBS only, pH7.3

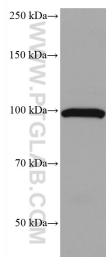
For technical support and original validation data for this product please contact:

T: 1 (888) 4PTGLAB (1-888-478-4522) (toll free in USA), or 1(312) 455-8498 (outside USA)

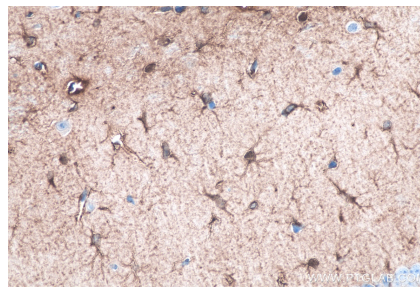
E: [proteintech@ptglab.com](mailto:proteintech@ptglab.com)  
W: [ptglab.com](http://ptglab.com)

This product is exclusively available under Proteintech Group brand and is not available to purchase from any other manufacturer.

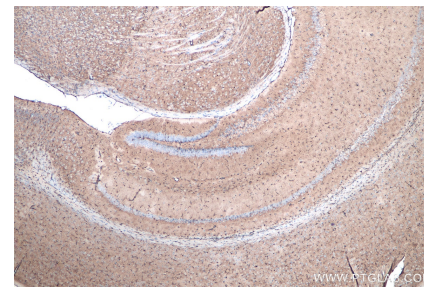
## Selected Validation Data



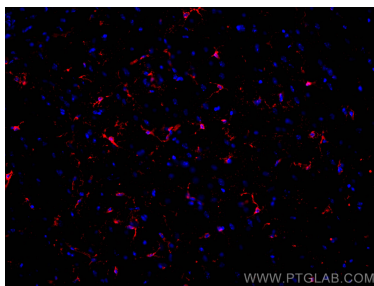
human milk were subjected to SDS PAGE followed by western blot with 68018-1-Ig (ALDH1L1 antibody) at dilution of 1:20000 incubated at room temperature for 1.5 hours. This data was developed using the same antibody clone with 68018-1-PBS in a different storage buffer formulation.



Immunohistochemical analysis of paraffin-embedded mouse brain tissue slide using 68018-1-Ig (ALDH1L1 antibody) at dilution of 1:32000 (under 40x lens). Heat mediated antigen retrieval with Tris-EDTA buffer (pH 9.0). This data was developed using the same antibody clone with 68018-1-PBS in a different storage buffer formulation.



Immunohistochemical analysis of paraffin-embedded mouse brain tissue slide using 68018-1-Ig (ALDH1L1 antibody) at dilution of 1:32000 (under 4x lens). Heat mediated antigen retrieval with Tris-EDTA buffer (pH 9.0). This data was developed using the same antibody clone with 68018-1-PBS in a different storage buffer formulation.



Immunofluorescent analysis of (4% PFA) fixed frozen OCT-embedded mouse brain tissue using ALDH1L1 antibody (68018-1-Ig, Clone: 1C1A3 ) at dilution of 1:400 and Coralite®594-Conjugated AffiniPure Goat Anti-Mouse IgG(H+L) (SA00013-3). This data was developed using the same antibody clone with 68018-1-PBS in a different storage buffer formulation.